

## ZIONZ ONE DEPARTURE (RNAV)

AL-365 (FAA)

SALT LAKE CITY INTL (SLC)  
SALT LAKE CITY, UTAH

D-ATIS

124.75 125.625

CLNC DEL

127.3 379.975

CPDLC

GND CON

121.9 348.6 (Rwys 14-32, 17-35)

123.775 348.6 (Rwys 16L-34R, 16R-34L)

SALT LAKE CITY TOWER

119.05 257.8 (Rwy 16L-34R)

118.3 257.8 (Rwys 14-32, 17-35)

132.65 336.4 (Rwy 16R-34L)

SALT LAKE CITY DEP CON

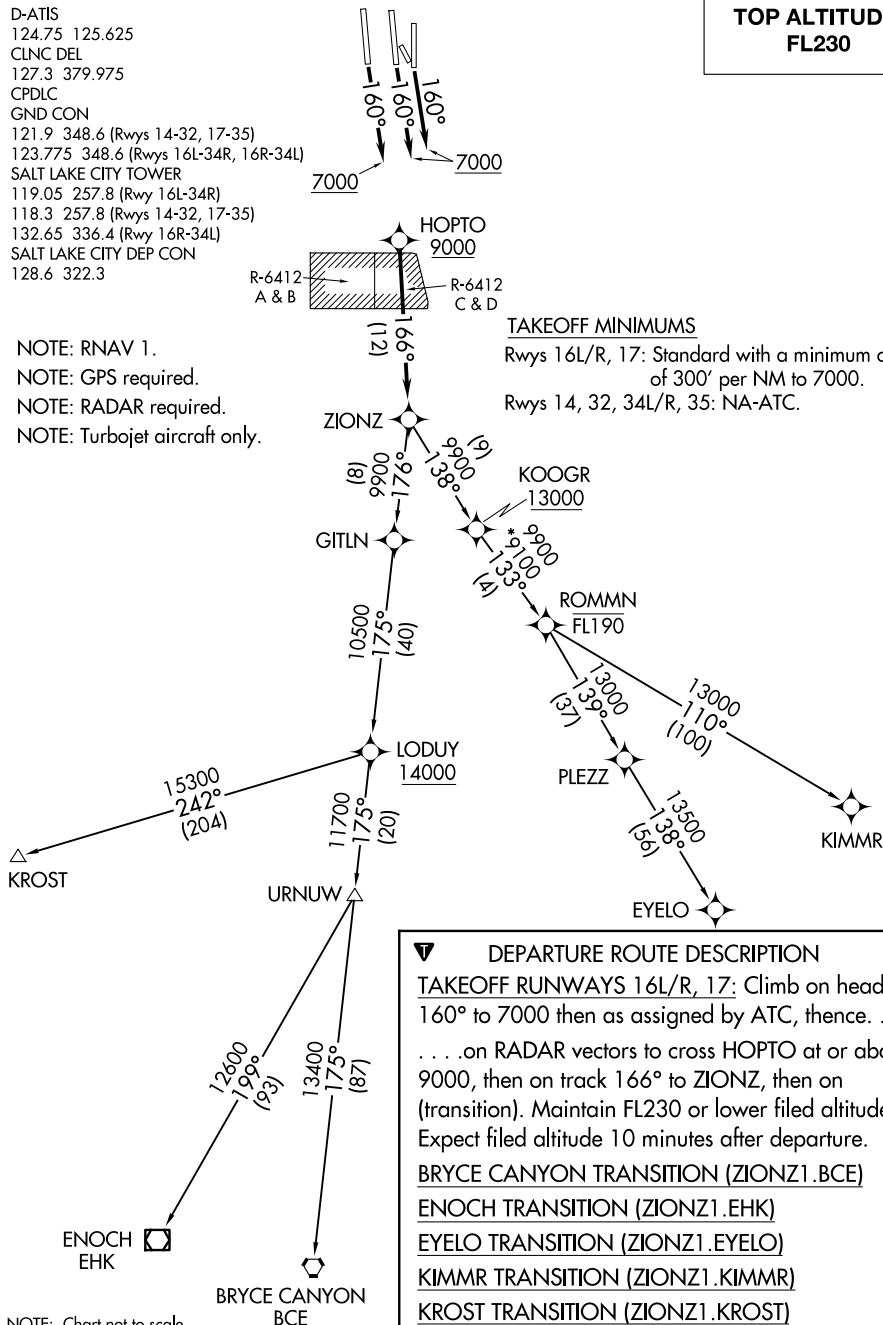
128.6 322.3

NOTE: RNAV 1.

NOTE: GPS required.

NOTE: RADAR required.

NOTE: Turbojet aircraft only.



## DEPARTURE ROUTE DESCRIPTION

**TAKEOFF RUNWAYS 16L/R, 17:** Climb on heading 160° to 7000 then as assigned by ATC, thence. . .

...on RADAR vectors to cross HOPTO at or above 9000, then on track 166° to ZIONZ, then on (transition). Maintain FL230 or lower filed altitude. Expect filed altitude 10 minutes after departure.

## BRYCE CANYON TRANSITION (ZIONZ1.BCE)

# ENOCH TRANSITION (ZIONZ1.EHK)

## EYELO TRANSITION (ZIONZ1.EYELO)

## KIMMR TRANSITION (ZIONZ1.KIMMR)

## KROST TRANSITION (ZIONZ1.KROST)

NOTE: Chart not to scale.

## ZIONZ ONE DEPARTURE (RNAV)

(ZIONZ1.ZIONZ) 24MAY18

SALT LAKE CITY, UTAH  
SALT LAKE CITY INTL (SLC)

SW-4, 07 AUG 2025 to 04 SEP 2025

SW-4, 07 AUG 2025 to 04 SEP 2025