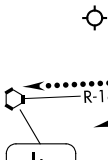
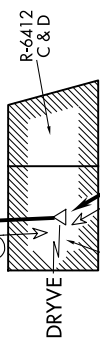


SALT LAKE CITY APP CON
128.6 322.3
D-ATIS
124.75 125.625



OGDEN
115.7 OGD
Chan 104

N



R-6412A to 9000,
R-6412B 9000 to 10000
by NOTAM
Salt Lake City Tower

FAIRFIELD
116.6 FFU
Chan 113

SPANE
VERTICAL NAVIGATION
PLANNING INFORMATION
PROP/TURBOPROP
LANDING NORTH: Expect 16000
LANDING SOUTH: Expect 17000
JET
LANDING NORTH: Expect 16000
LANDING SOUTH: Expect FL190

NOTE: DME required.
NOTE: Chart not to scale.

(SPANE.SPANE8) 24137
SPANE EIGHT ARRIVAL

AL-365 (FAA)

SALT LAKE CITY INTL (SLC)
SALT LAKE CITY, UTAH

ARRIVAL ROUTE DESCRIPTION

HELPR TRANSITION (HELPR.SPANE8): From over HELPR on FFU R-100 to SPANE, thence
MEEKER TRANSITION (EKR.SPANE8): From over EKR VOR/DME on EKR R-264 to RACER, then on EKR R-264 and MTU R-078 to MTU VOR/DME, then on MTU R-255 to SPANE, thence

LANDING NORTH: From SPANE on FFU R-100 to BOAGY, then to FFU VORTAC. Expect ILS RWY 34R approach.

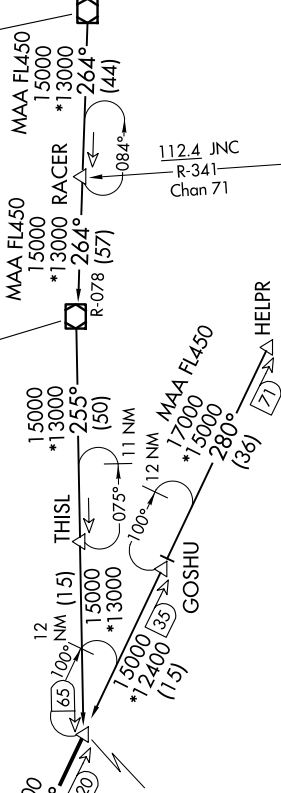
LANDING SOUTH: From SPANE on FFU R-100 to BOAGY, then to FFU VORTAC, then on FFU R-314 to DRYVE, then on OGD R-163 to CHHIP. After CHHIP, fly heading 345° for vectors to ILS or Visual RWY 16R approach.

LOST COMMUNICATIONS

LANDING SOUTH: In the event of lost communications, at CHHIP proceed direct OGD VORTAC. Maintain 12000 until OGD VORTAC.

MEEKER
115.2 EKR
Chan 99

MYTON
112.7 MTU
Chan 74



SPANE EIGHT ARRIVAL
(SPANE.SPANE8) 16MAY24

SALT LAKE CITY, UTAH
SALT LAKE CITY INTL (SLC)