

WAAS CH <b>42843</b> <b>W35A</b>	APP CRS <b>344°</b>	Rwy Ldg <b>9272</b> TDZE <b>4227</b> Apt Elev <b>4231</b>
--	------------------------	---

RNAV (GPS) Y RWY 35  
SALT LAKE CITY INTL (SLC)

RNP APCH - GPS.

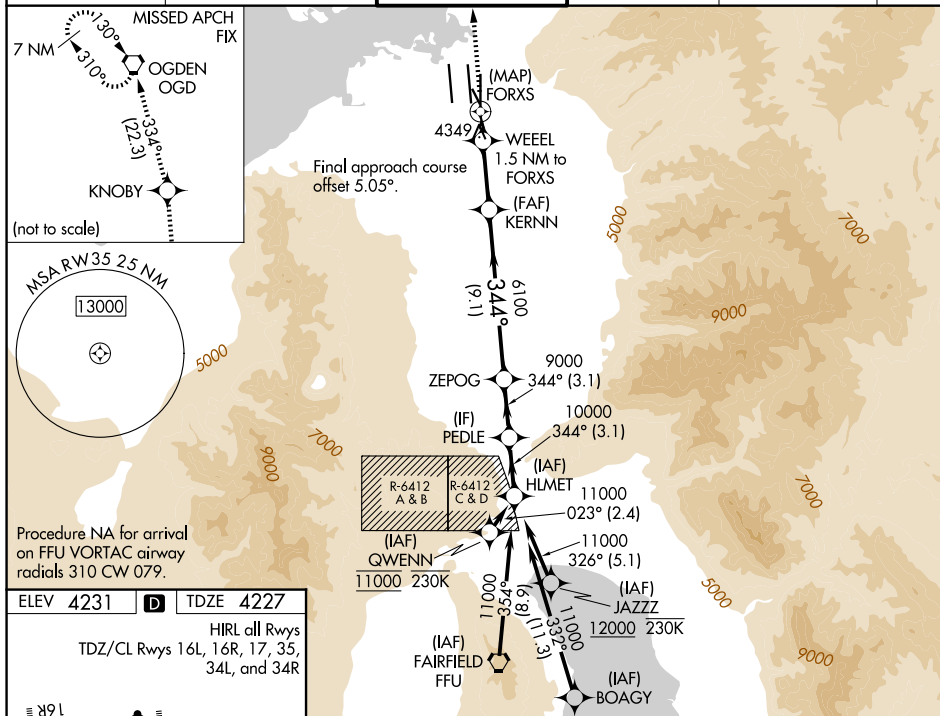
**V** Simultaneous approach authorized. LNAV procedure NA during simultaneous operations. For uncompensated Baro-VNAV systems, LNAV/VNAV NA below -23°C or above 49°C. Use of FD or AP required during simultaneous operations. For inop ALS, increase LPV Cat E visibility to RVR 4000, increase LNAV/VNAV all Cats visibility to RVR 4500, and increase LNAV Cats C/D/E visibility to RVR 5500.

MALSR



**MISSED APPROACH:** Climb to 9000 direct KNOBY and on track 334° to OGD VORTAC and hold.

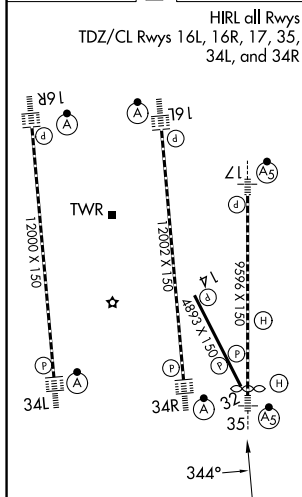
D-ATIS	SALT LAKE CITY APP CON	SALT LAKE CITY TOWER	GND CON	CLNC DEL	CPDLC
124.75 125.625	125.7 284.6	118.3 257.8	121.9 348.6	127.3 379.975	



Procedure NA for arrival  
on FFU VORTAC airway  
radials 310 CW 079.

ELEV 4231	<b>D</b>	TDZE 4227
-----------	----------	-----------

HIRL all Rwy's  
TDZ/CL Rwy's 16L, 16R, 17, 35,  
34L, and 34R



9000 ↑	KNOBY ✦	Ir 334°	OGD ⬢	VGS1 and RNAV glidepath not coincident (VGS1 Angle 3.00/TCH 74).				
				KERNIN	ZEPOG	PEDLE	HLMET	
				WEEEL 0.5 NM to FORXS 1.5 NM to FORXS	6100	9000	10000	11000
				FORXS	4900	6100	344°	GP 3.00° TCH 55
				0.4	0.5	1 NM	3.8 NM	9.1 NM
				A	B	C	D	E
LPV DA		4478/24 251 (300-½)						
LNAV/VNAV DA		4500/24 273 (300-½)				4507/24 280 (300-½)	4547/24 320 (400-½)	
LNAV MDA		4600/24 373 (400-½)			4600/40 373 (400-¾)			