

SALT LAKE CITY, UTAH

AL-365 (FAA)

25219

WAAS CH 49230 W34A	APP CRS 344°	Rwy Ldg 12002 TDZE 4225 Apt Elev 4231
--	------------------------	--

RNAV (GPS) Y RWY 34R
SALT LAKE CITY INTL (SLC)

RNP APCH - GPS

▼ Simultaneous approach authorized. For uncompensated Baro-VNAV systems, LNAV/VNAV NA below -10°C or above 49°C. Use of FD or AP providing RNAV track guidance required during simultaneous operations. LNAV procedure NA during simultaneous operations. For inop ALS, increase LPV Cat E visibility to RVR 4000, LNAV/VNAV Cat E visibility to RVR 5000, LNAV Cats C/D visibility to RVR 5500, LNAV Cat E visibility to RVR 6000. Cat E restricted to USAF/USN aircraft.

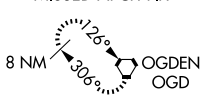
ALSF-2



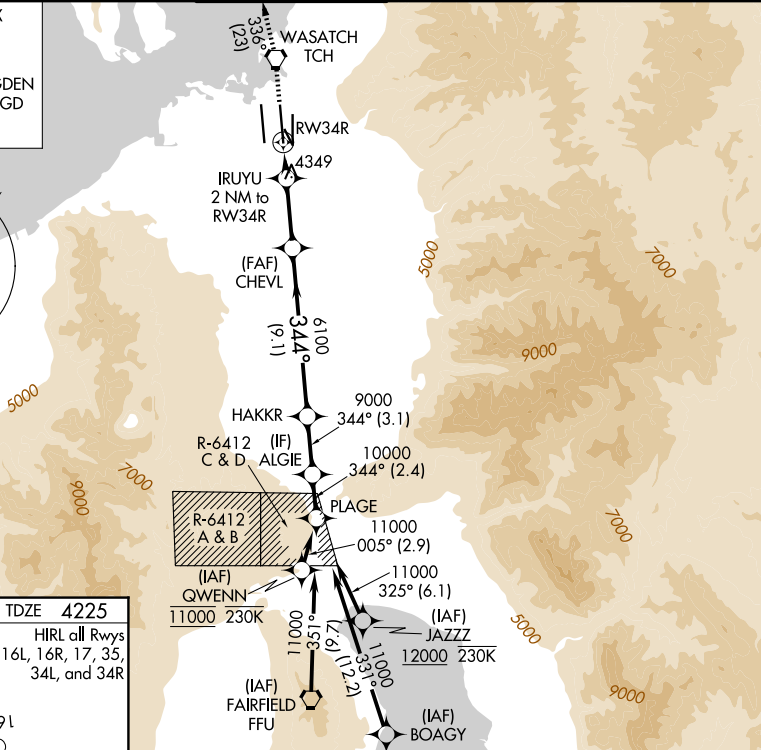
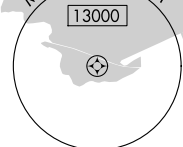
MISSED APPROACH: Climb to 9000 direct TCH VORTAC and on track 336° to OGD VORTAC and hold.

D-ATIS	SALT LAKE CITY APP CON	SALT LAKE CITY TOWER	GND CON	CLNC DEL	CPDLC
124.75 125.625	125.7 284.6	119.05 257.8	123.775 348.6	127.3 379.975	

MISSED APCH FIX

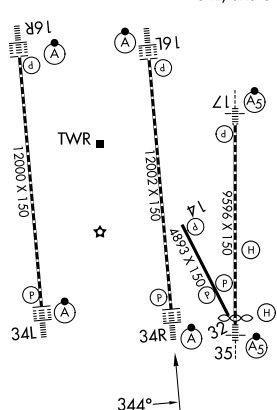


MSA RW34R 25 NM



ELEV 4231	D	TDZE 4225
-----------	----------	-----------

HIRL all Rwy
TDZ/CL Rwy 16L, 16R, 17, 35,
34L, and 34R



9000 ↑	TCH ⬡	tr 336°	OGD ⬡	VGS1 and RNAV glidepath not coincident (VGS1 Angle 3.00°/TCH 73°).				ALGIE	PLAGE
				GP 3.00° TCH 55					
CATEGORY	A		B		C	D		E	
LPV DA			4425/18		200 (200-½)				
RNAV/ VNAV	DA		4557/26		332 (400-½)				
RNAV MDA	4600/24		375 (400-½)		4600/35		375 (400-¾) 415 (500-¾)		

SALT LAKE CITY, UTAH
Amdt 2 20FEB25

40°47'N-111°59'W

SALT LAKE CITY INTL (SLC)

RNAV (GPS) Y RWY 34R

SW-4, 07 AUG 2025 to 04 SEP 2025