

SALT LAKE CITY, UTAH

AL-365 (FAA)

25219

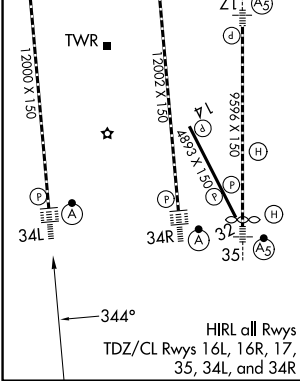
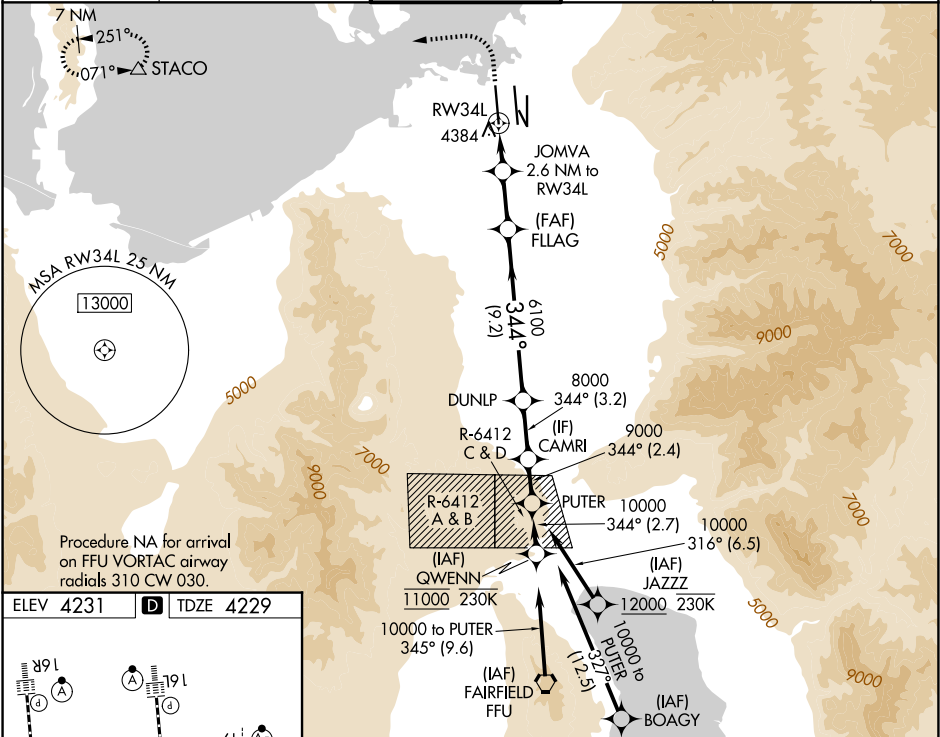
WAAS CH <b>70432</b> <b>W34B</b>	APP CRS <b>344°</b>	Rwy Ldg TDZE Apt Elev	<b>12000</b> <b>4229</b> <b>4231</b>
--	------------------------	-----------------------------	--

# RNAV (GPS) Y RWY 34L

SALT LAKE CITY INTL (SLC)

RNP APCH - GPS. Simultaneous approach authorized. LNAV procedure NA during simultaneous operations. Use of FD or AP providing RNAV track guidance required during simultaneous operations. For uncompensated Baro-VNAV systems, LNAV/VNAV NA below -10°C or above 49°C. For inop ALS, increase LPV Cat E visibility to RVR 4000, LNAV/VNAV all Cats visibility to RVR 6000, LNAV Cat E visibility to 1¼ SM. Cat E restricted to USAF/USN aircraft.	ALSf-2 	MISSED APPROACH: Climb to 4800 then climbing left turn to 8100 direct STACO and hold.
---	------------	--

D-ATIS <b>124.75 125.625</b>	SALT LAKE CITY APP CON <b>125.7 284.6</b>	SALT LAKE CITY TOWER <b>132.65 336.4</b>	GND CON <b>123.775 348.6</b>	CLNC DEL <b>127.3 379.975</b>	CPDLC
---------------------------------	--	---	---------------------------------	----------------------------------	-------



4800	8100	STACO	VGSI and RNAV glidepath not coincident (VGSI Angle 3.00/TCH 73).			PUTER
CATEGORY		A	B	C	D	E
LPV DA		4429/18 200 (200-½)				
LNAV/ VNAV		4640/40 411 (500-¾)				
LNAV MDA		4660/24 431 (500-½)		4660/40 431 (500-¾)		

SALT LAKE CITY, UTAH

40°47'N-111°59'W

SALT LAKE CITY INTL (SLC)

Amtd 2 20FEB25

# RNAV (GPS) Y RWY 34L

SW-4, 07 AUG 2025 to 04 SEP 2025

SW-4, 07 AUG 2025 to 04 SEP 2025