

WAAS CH <b>70546</b> <b>W16B</b>	APP CRS <b>164°</b>	Rwy Ldg <b>12002</b> TDZE <b>4231</b> Apt Elev <b>4231</b>
--	------------------------	--

RNAV (GPS) Y RWY 16L  
SALT LAKE CITY INTL (SLC)

SALT LAKE CITY INTL (SLC)

RNP APCH - GPS.

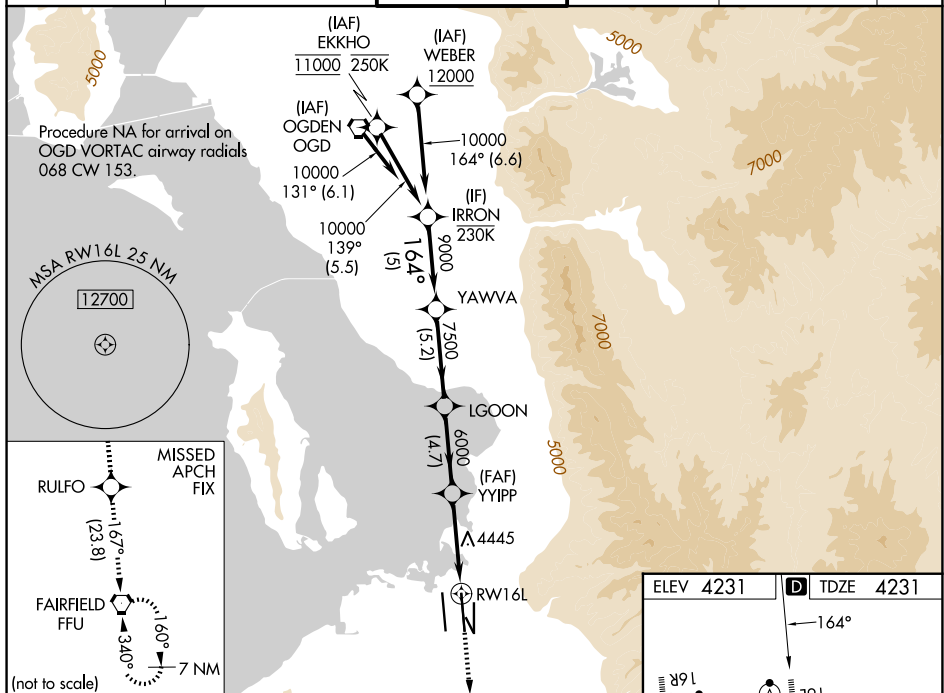
**V** LNAV procedure NA during simultaneous operations. Simultaneous approach authorized. Use of FD or AP required during simultaneous operations. For uncompensated Baro-NAV systems, LNAV/VNAV NA below -10°C or above 49°C. For inop ALS, increase LPV Cat E visibility to RVR 4000, increase LNAV/VNAV Cat A visibility to RVR 4500, increase Cats C/D visibility to RVR 5500, increase Cat E visibility to 6000, and increase LNAV Cat E visibility to 1½ SM.

ALSF-2

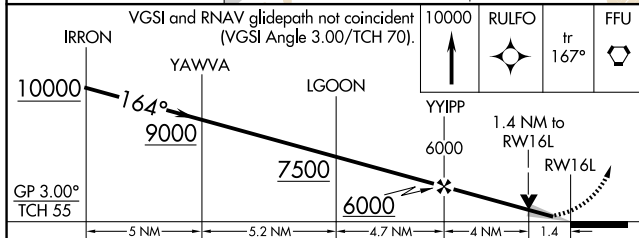


**MISSED APPROACH:**  
Climb to 10000 direct  
RULFO and on track  
167° to FFU VORTAC  
and hold.

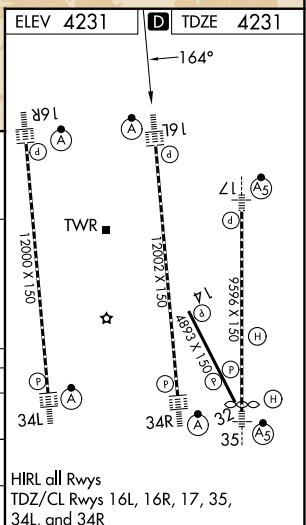
D-ATIS 124.75 125.625	SALT LAKE CITY APP CON 125.7 284.6	SALT LAKE CITY TOWER 119.05 257.8	GND CON 123.775 348.6	CLNC DEL 127.3 379.975	CPDLC
--------------------------	---------------------------------------	--------------------------------------	--------------------------	---------------------------	-------



VGSI and RNAV glidepath not coincident (VGSI Angle 3.00/TCH 70).



CATEGORY	A	B	C	D	E
LPV DA	4431/18 200 (200-½)				
INAV/ VNAV DA	4537/24 306 (400-½)	4559/26 328 (400-½)	4574/30 343 (400-¾)	4593/35 362 (400-¾)	4634/40 403 (500-¾)
INAV MDA	4760/24 529 (600-½)	4760/55 529 (600-1)			



SALT LAKE CITY, UTAH

Amdt 3 20FEB25

40°47'N-111°59'W

SALT LAKE CITY INTL (SLC)

RNAV (GPS) Y RWY 16L

SW-4, 07 AUG 2025 to 04 SEP 2025

SW-4, 07 AUG 2025 to 04 SEP 2025