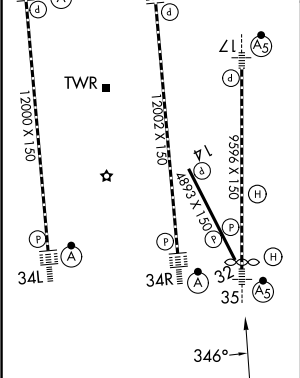
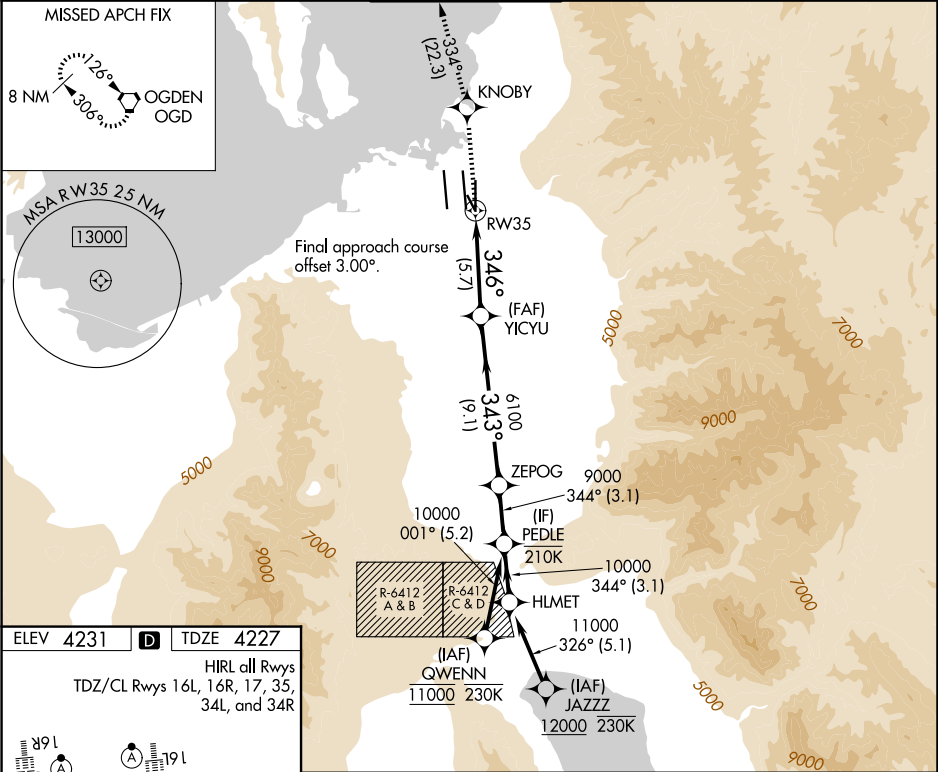


APP CRS	Rwy Ldg	9272
346°	TDZE	4227
	Apt Elev	4231

RNAV (RNP) Z RWY 35
SALT LAKE CITY INTL (SLC)

RNP AR APCH - GPS. ▼ For uncompensated Baro-VNAV systems, procedure NA below -10°C or above 54°C. For inop ALS, increase RNP 0.20 all Cats visibility to RVR 4500.		MALSR 	MISSED APPROACH: Climb to 9000 direct KNOBY and on track 334° to OGD VORTAC and hold.		
D-ATIS 124.75 125.625	SALT LAKE CITY APP CON 125.7 284.6	SALT LAKE CITY TOWER 118.3 257.8	GND CON 121.9 348.6	CLNC DEL 127.3 379.975	CPDLC



9000	KNOBY	tr 334°	OGD	VGSI and RNAV glidepath not coincident (VGSI Angle 3.00/TCH 74).		HLMET
				ZEPOG	PEDLE	11000
				YICYU		10000
				RW35		6100
						GP 3.00° TCH 55
CATEGORY	A	B	C	D	E	
RNP 0.20 DA		4502/24	275 (300-½)			
RNP 0.30 DA		4625/35	398 (400-¾)			
AUTHORIZATION REQUIRED						