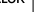
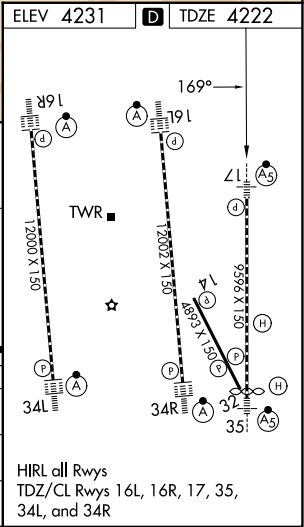
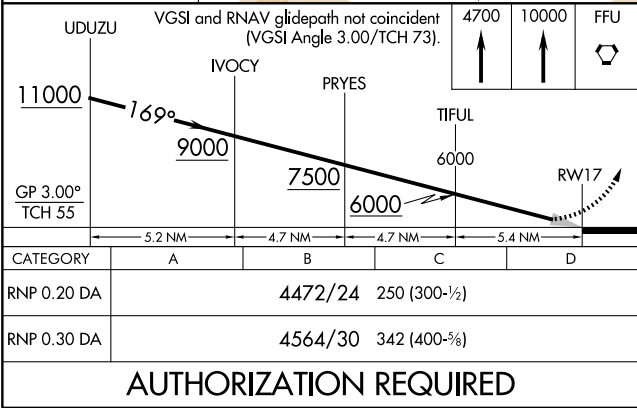
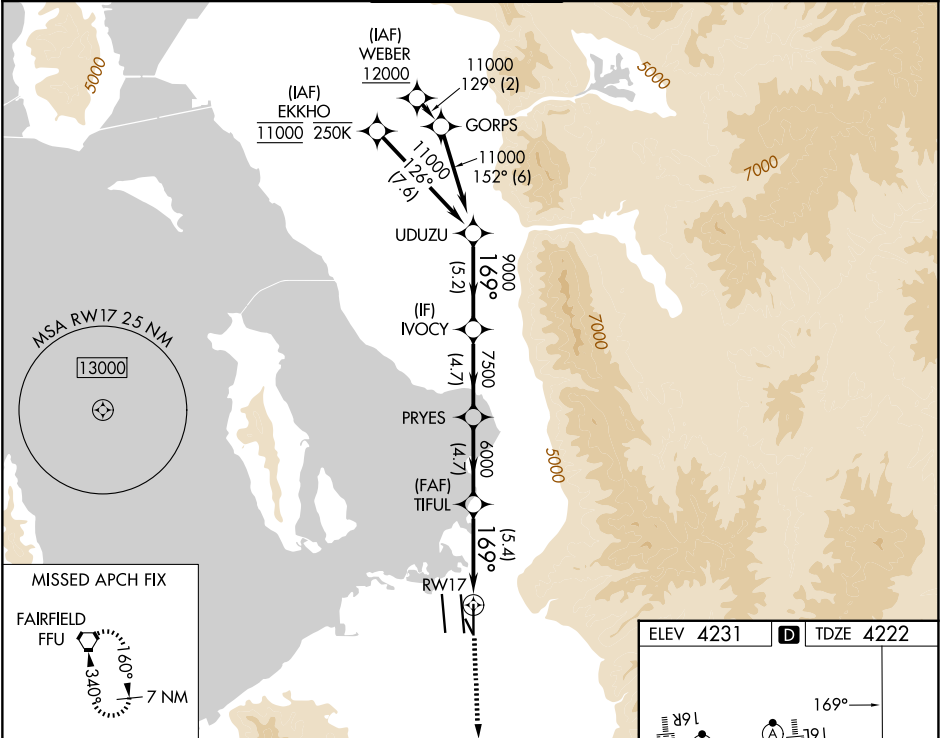


APP CRS	Rwy Ldg	9596
169°	TDZE	4222
	Apt Elev	4231

RNAV (RNP) Z RWY 17

SALT LAKE CITY INTL (SLC)

RNP AR APCH - GPS.			MALSR 	MISSED APPROACH: Climb to 4700 then climb to 10000 direct FFU VORTAC and hold.		
▼ For uncompensated Baro-VNAV systems, procedure NA below -10°C or above 54°C. Simultaneous approach authorized. For inop ALS, increase RNP 0.20 all Cats visibility to RVR 4000 and RNP 0.30 all Cats visibility to RVR 5500.						
D-ATIS	SALT LAKE CITY APP CON	SALT LAKE CITY TOWER	GND CON	CLNC DEL	CPDLC	
124.75 125.625	125.7 284.6	118.3 257.8	121.9 348.6	127.3 379.975		



SW-4, 07 AUG 2025 to 04 SEP 2025

SW-4, 07 AUG 2025 to 04 SEP 2025