

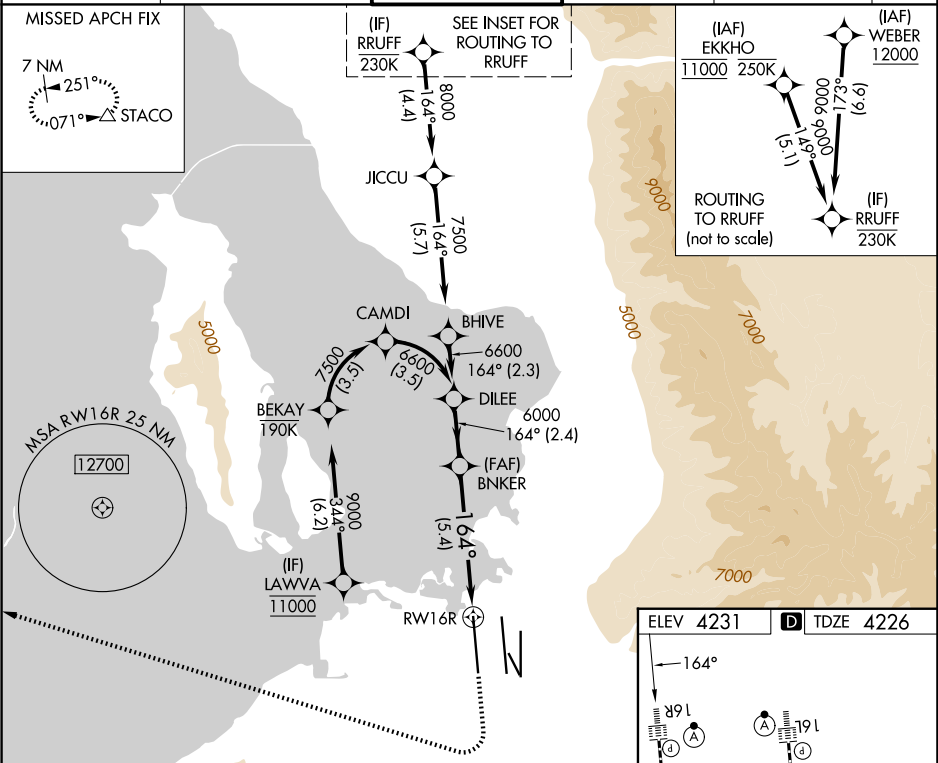
APP CRS	Rwy Ldg	12000
164°	TDZE	4226
	Apt Elev	4231

RNAV (RNP) Z RWY 16R

SALT LAKE CITY INTL (SLC)

RNP AR APCH - GPS. Authorization required. From LAWVA: RF.	ALSF-2	MISSED APPROACH: Climb to 4800 then climbing right turn to 8100 direct STACO and hold.
For uncompensated Baro-VNAV systems, procedure NA below -10°C or above 54°C. Simultaneous approach authorized. For inop ALS, increase RNP 0.10 all Cats visibility to RVR 4000, and increase RNP 0.30 all Cats visibility to RVR 5500.		*Missed approach requires minimum climb of 339 feet per NM to 4680.

D-ATIS	SALT LAKE CITY APP CON	SALT LAKE CITY TOWER	GND CON	CLNC DEL	CPDLC
124.75 125.625	125.7 284.6	132.65 336.4	123.775 348.6	127.3 379.975	



DILEE	VGSI and RNAV glidepath not coincident (VGSI Angle 3.00/TCH 73).	4800	8100	STACO
6600	BNKER	6000		
GP 3.00°	6000			
TCH 34				
	2.4 NM	5.4 NM		
CATEGORY	A	B	C	D
RNP 0.10 DA*		4481/24	255 (300-1/2)	
RNP 0.30 DA		4597/35	371 (400-3/4)	
AUTHORIZATION REQUIRED				
SALT LAKE CITY, UTAH				
Orig 20FEB25				
40°47'N-111°59'W				
SALT LAKE CITY INTL (SLC)				
RNAV (RNP) Z RWY 16R				