

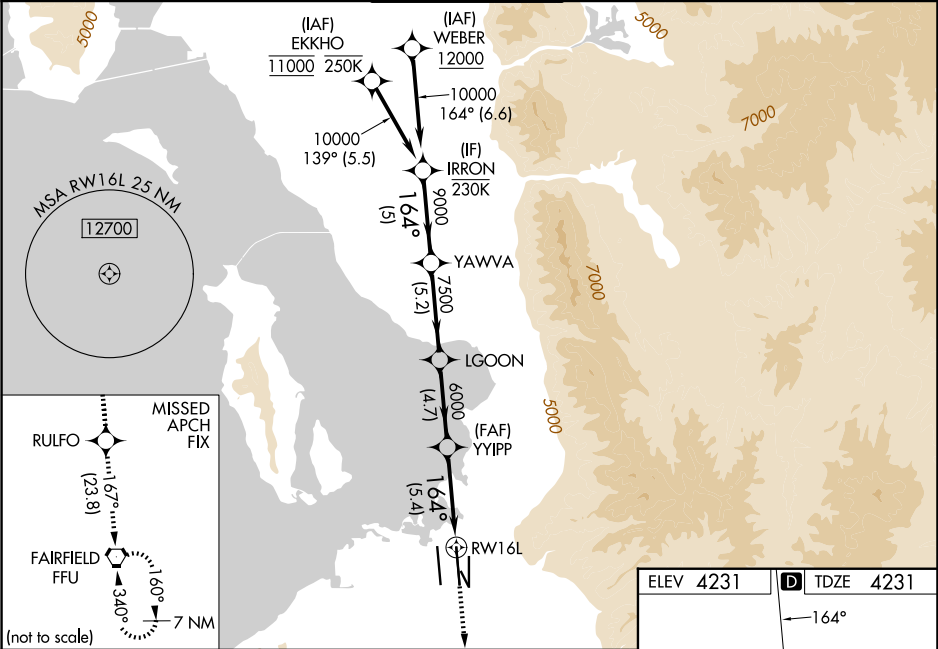
APP CRS	Rwy Ldg	12002
164°	TDZE	4231
	Apt Elev	4231

RNAV (RNP) Z RWY 16L

SALT LAKE CITY INTL (SLC)

RNP AR APCH - GPS.	ALSF-2	MISSED APPROACH: Climb to 10000 direct RULFO and on track 167° to FFU VORTAC and hold. * Missed approach requires minimum climb of 323 feet per NM to 4740. # Missed approach requires minimum climb of 256 feet per NM to 4760.
▼ For uncompensated Baro-VNAV systems, procedure NA below -10°C or above 54°C. Simultaneous approach authorized. For inop ALS, increase RNP 0.16 all Cats visibility RVR to 5500, increase RNP 0.16 (323) all Cats visibility to RVR 4500 and increase RNP 0.30 all Cats visibility to RVR 5500.		

D-ATIS	SALT LAKE CITY APP CON	SALT LAKE CITY TOWER	GND CON	CLNC DEL	CPDLC
124.75 125.625	125.7 284.6	119.05 257.8	123.775 348.6	127.3 379.975	



VGSI and RNAV glidepath not coincident (VGSI Angle 3.00/TCH 70).					10000	RULFO	tr 167°	FFU
IRRON	YAWVA	LGOON	YYIPP	RW16L				
10000	9000	7500	6000					
GP 3.00° TCH 55								
5 NM					5.2 NM	4.7 NM	5.4 NM	
CATEGORY	A	B	C	D				
RNP 0.16 DA*	4516/24 285 (300-½)						NA	
RNP 0.30 DA#	4565/26 334 (400-½)							
RNP 0.16 DA	4573/30 342 (400-¾)						NA	
RNP 0.30 DA	4592/35 361 (400-¾)							
AUTHORIZATION REQUIRED								

