

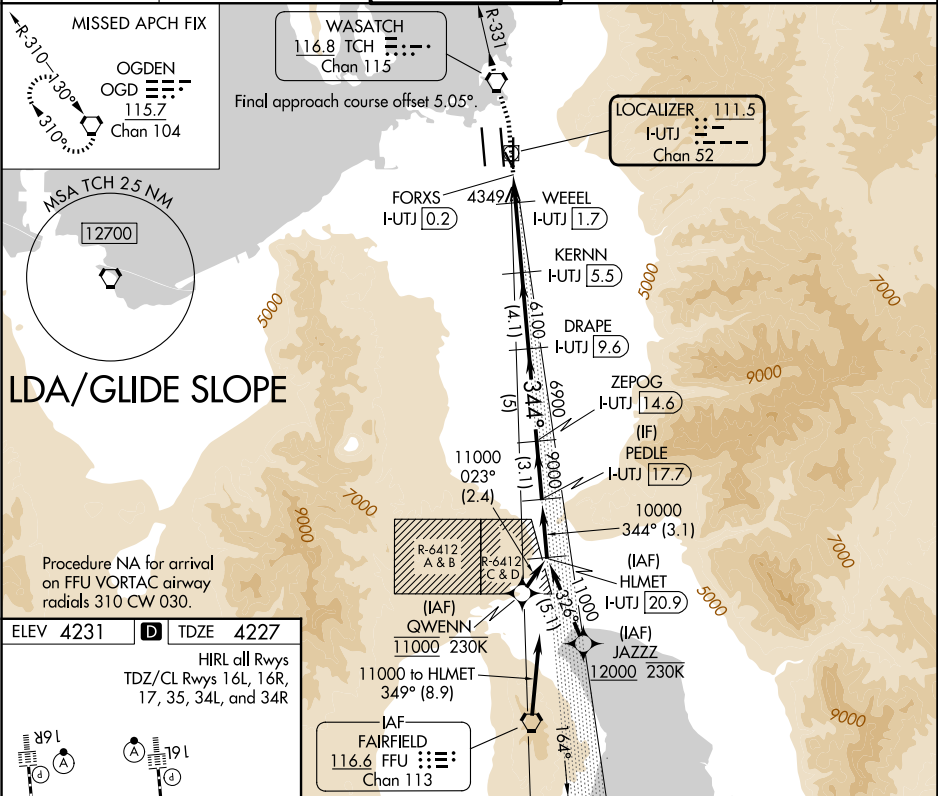


LOC/DME I-UTJ 111.5 Chan 52	APP CRS 344°	Rwy Ldg TDZE 4227 Apt Elev 4231	LDA RWY 35 SALT LAKE CITY INTL (SLC)	
---	------------------------	---	--	--

RNP APCH - GPS. From QWENN or JAZZZ.		MALSR 	MISSED APPROACH: Climb to 4800 then climbing left turn to 9000 direct TCH VORTAC and on TCH VORTAC R-331 to OGD VORTAC and hold.
DME required.			
 Simultaneous approach authorized. For inop ALS, increase S-LDA/GS 35 all Cats visibility to RVR 4000, increase S-LDA 35 Cat E visibility to 1¼ SM. Cat E restricted to USAF/USN aircraft.			

D-ATIS 124.75 125.625	SALT LAKE CITY APP CON 125.7 284.6	SALT LAKE CITY TOWER 118.3 257.8	GND CON 121.9 348.6	CLNC DEL 127.3 379.975	CPDLC
---------------------------------	--	--	-------------------------------	----------------------------------	-------



	VGSi and LDA glidepath not coincident (VGSi Angle 3.00/TCH 74).					PEDLE I-UTJ 17.7					
	I-UTJ DME ANTENNA		KERNN I-UTJ 5.5		DRAPE I-UTJ 9.6		ZEPOG I-UTJ 14.6				
	FORXS I-UTJ 0.2		WHEEL I-UTJ 1.7		6100		344° 9000				
	4900		6100		6900		10000				
	0.4		0.7		0.8		3.8 NM				
CATEGORY		A		B		C		D		E	
S-LDA/GS 35		4477/24		250 (300-½)							
S-LDA 35		4660/24		433 (500-½)		4660/40		433 (500-¾)			