

JAZZZ ONE ARRIVAL (RNAV)

AL-365 (FAA)

SALT LAKE CITY INTL (SLC)
SALT LAKE CITY, UTAH

SW-4, 07 AUG 2025 to 04 SEP 2025

SW-4, 07 AUG 2025 to 04 SEP 2025

SALT LAKE CITY APP CON
128.6 322.3
D-ATIS
124.75 125.625

ARRIVAL ROUTE DESCRIPTION

HELPR TRANSITION (HELPR.JAZZZ1)

MYTON TRANSITION (MTU.JAZZZ1)

RACER TRANSITION (RACER.JAZZZ1)

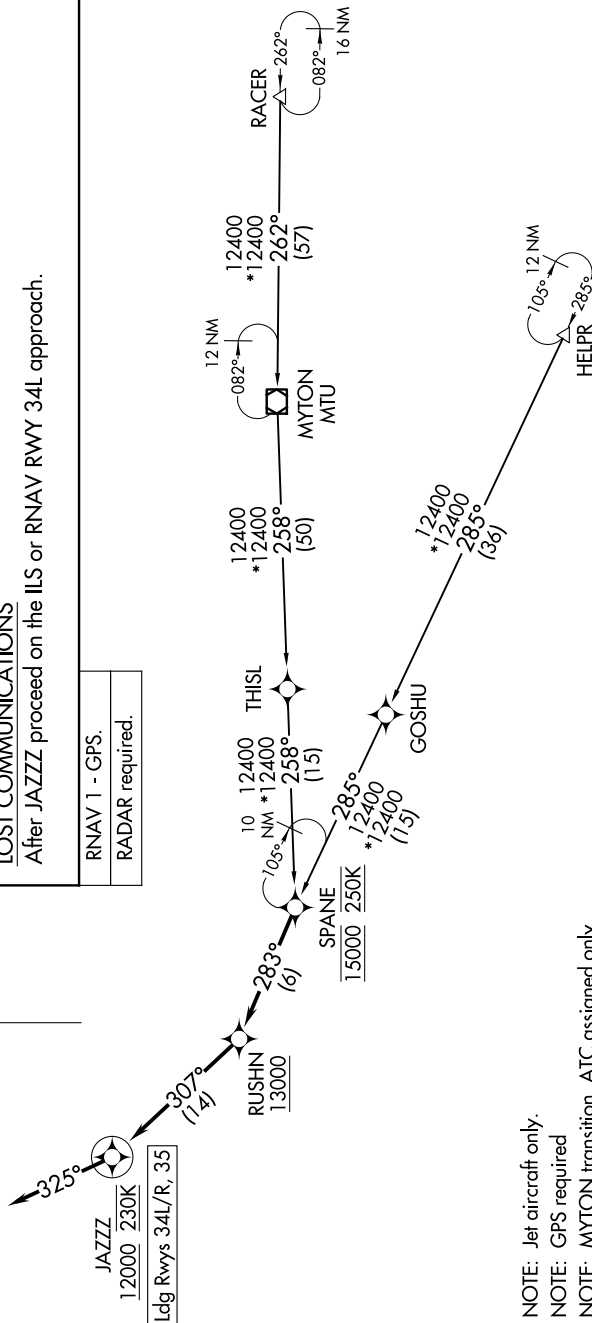
From SPANE on track 283° to cross RUSHN at or above 13000, then on track 307° to cross JAZZZ at or above 12000 and at 230K, then on track 325°. Expect RADAR vectors for ILS or RNAV approach to Rwy 34L/R. 35 or RADAR vectors to final approach course.

LOST COMMUNICATIONS

After JAZZZ proceed on the ILS or RNAV RWY 34L approach.

RNAV 1 - GPS.

RADAR required.



NOTE: Jet aircraft only.

NOTE: GPS required

NOTE: MYTON transition, ATC assigned only.

NOTE: Chart not to scale.

JAZZZ ONE ARRIVAL (RNAV)

(SPANE.JAZZZ1) 20FEB25

SALT LAKE CITY, UTAH
SALT LAKE CITY INTL (SLC)