

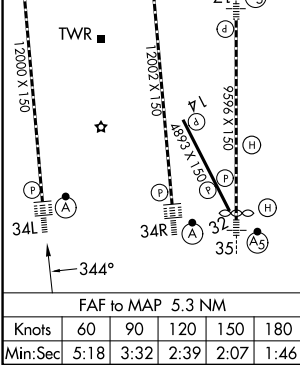
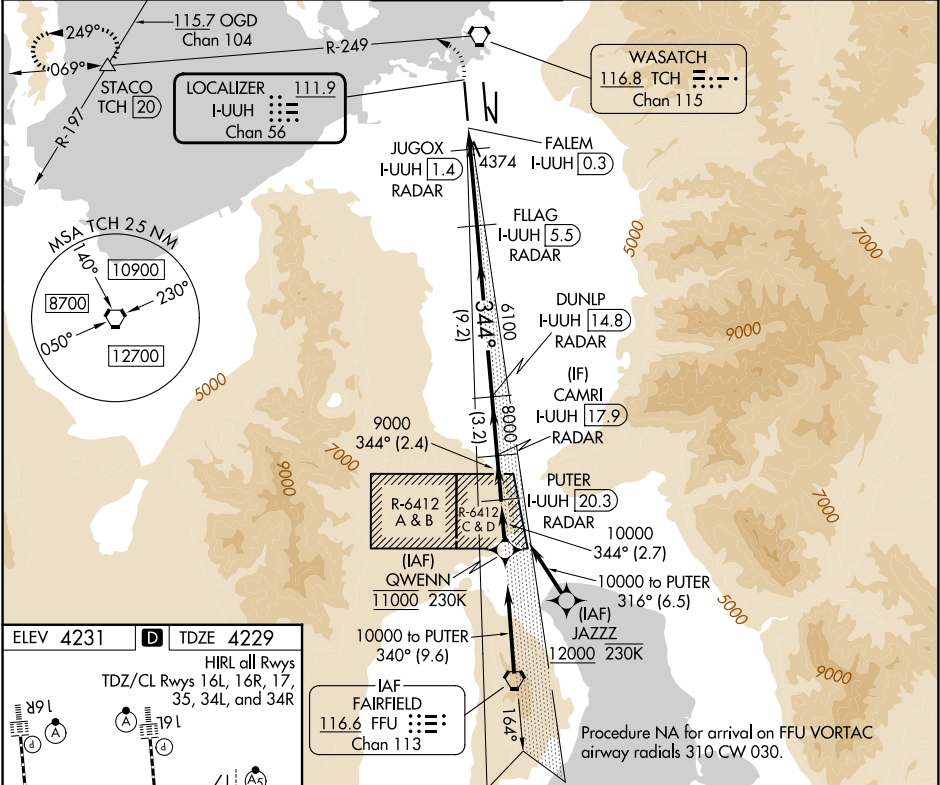


LOC/DME I-UUH	APP CRS	Rwy Ldg	12000
111.9	344°	TDZE	4229
Chan 56		Apt Elev	4231

ILS or LOC RWY 34L
SALT LAKE CITY INTL (SLC)

RNP APCH - GPS. From QWENN or JAZZZ.		ALSIF-2 	MISSED APPROACH: Climb to 4800 then climbing left turn to 8100 on TCH VORTAC R-249 to STACO INT/TCH 20 DME and hold.		
DME or RADAR required.					
 Simultaneous approach authorized. For inop ALS, increase S-LOC 34L Cat C/D visibility to RVR 6000.					
D-ATIS	SALT LAKE CITY APP CON	SALT LAKE CITY TOWER	GND CON	CLNC DEL	CPDLC
124.75 125.625	125.7 284.6	132.65 336.4	123.775 348.6	127.3 379.975	



4800 ↑ TCH R-249		STACO △		VGSI and ILS glidepath not coincident (VGSI Angle 3.00/TCH 73).			PUTER I-UUH [20.3] RADAR		
		JUGOX I-UUH [1.4] RADAR		FLAG I-UUH [5.5] RADAR		DUNLP I-UUH [14.8] RADAR		CAMRI I-UUH [17.9] RADAR	
FALEM I-UUH [0.3] RADAR		I-UUH [0.9] RADAR		6100		8000		344°→10000 9000	
4780		6100		8000		9000		GS 3.00° TCH 55	
0.5		0.6		0.5		4.1 NM		9.2 NM	
CATEGORY		A		B		C		D	
S-ILS 34L		4429/18		200 (200-½)					
S-LOC 34L		4640/24		411 (500-½)		4640/40		411 (500-¾)	

SW-4, 07 AUG 2025 to 04 SEP 2025

SW-4, 07 AUG 2025 to 04 SEP 2025