

LOC/DME I-BNT 111.5 Chan 52	APP CRS 169°	Rwy Ldg 9596 TDZE 4222 Apt Elev 4231
---	------------------------	---

ILS or LOC RWY 17
SALT LAKE CITY INTL (SLC)

From WEBER, EKKHO: RNAV 1-GPS required.

DME or RADAR required.

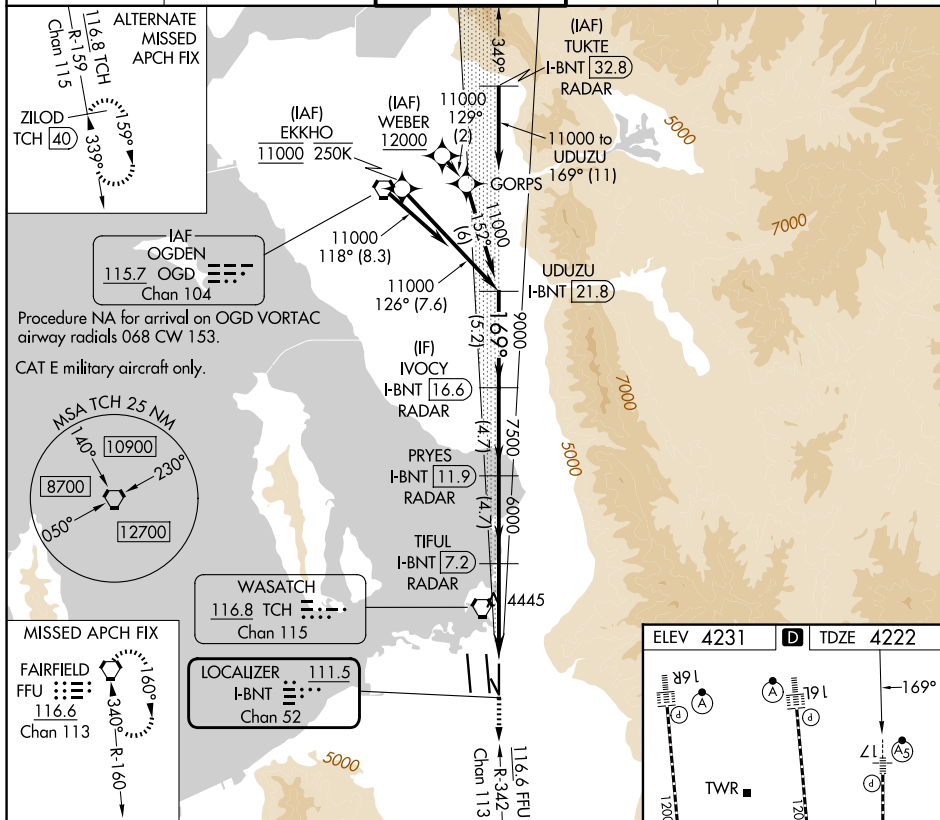
T Simultaneous approach authorized. For inop ALS, increase S-ILS 17 Cat E visibility to RVR 4000, increase S-LOC 17 Cat C/D/E visibility to 1 $\frac{3}{8}$ SM.

MALSI

MISSED APPROACH: Climb to 10000
on FFU R-342 to FFU VORTAC and hold.

D-ATIS	SALT LAKE CITY APP CON	SALT LAKE CITY TOWER	GND CON	CLNC DEL	CPDLC
124.75 125.625	125.7 284.6	118.3 257.8	121.9 348.6	127.3 379.975	



UDUZU I-BNT 21.8

IVOCY I-BNT 16.6

VGS1 and ILS glidepath not coincident (VGS1 Angle 3.00/TCH 73).

PRYS I-BNT 11.9

TIFUL I-BNT 7.2

11000

176°

9000

7500

6000

6000

GS 3.00° TCH 55

5.2 NM

4.7 NM

4.7 NM

4.1 NM

1.3

I-BNT 3

I-BNT 1.8

10000

FFU R-342

FFU

CATEGORY	A	B	C	D	E
S-ILS 17	4422/18 200 (200-½)				
S-LOC 17	4700/24	478 (500-½)	4700/50 478 (500-1)		

ELEV 4231 **D** TDZE 4222

169°

12000 x 150

12000 x 150

12000 x 150

9596 x 150

12000 x 150

169.3° x 1500 ft

34L

34R

35

HIRL all Rwyways
TDZ/CL Rwyways 16L, 16R, 17, 34L,
34R and 35

FAF to MAP 5.4 NM

	60	90	120	150	180
Knots	5:24	3:36	2:42	2:10	1:48
Min:Sec					