

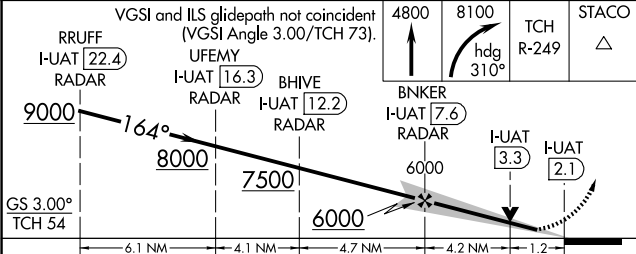
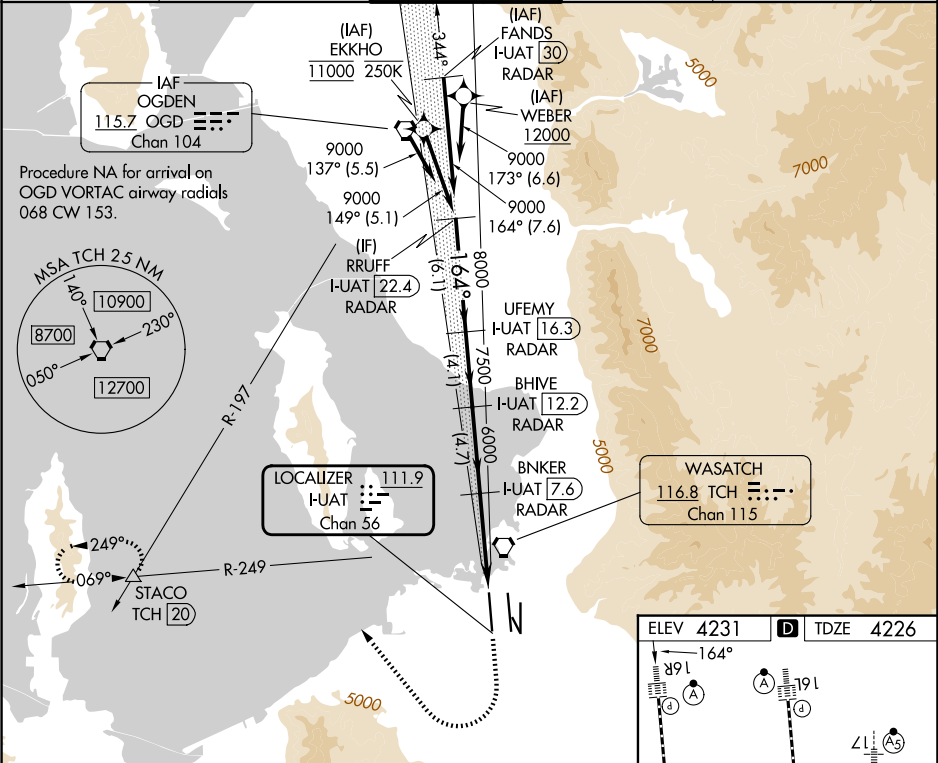
LOC/DME I-UAT <b>111.9</b> Chan <b>56</b>	APP CRS <b>164°</b>	Rwy Ldg <b>12000</b> TDZE <b>4226</b> Apt Elev <b>4231</b>
---	------------------------	--

ILS or LOC RWY 16R

SALT LAKE CITY INTL (SLC)

RNP APCH - GPS. From EKKHO or WEBER. DME or RADAR required.	ALSF-2 	MISSED APPROACH: Climb to 4800 then climbing right turn to 8100 on heading 310° and on TCH VORTAC R-249 to STACO INT/TCH 20 DME and hold.
Simultaneous approach authorized. For inop ALS, increase S-LOC 16R Cat A and B visibilities to RVR 5500, and Cat C and D visibilities to 1½ SM.		

D-ATIS <b>124.75 125.625</b>	SALT LAKE CITY APP CON <b>125.7 284.6</b>	SALT LAKE CITY TOWER <b>132.65 336.4</b>	GND CON <b>123.775 348.6</b>	CLNC DEL <b>127.3 379.975</b>	CPDLC
---------------------------------	--	---	---------------------------------	----------------------------------	-------



CATEGORY	A	B	C	D
S-ILS 16R	4426/18	200 (200-½)		
S-LOC 16R	4680/24	454 (500-½)	4680/45	454 (500-¾)

