

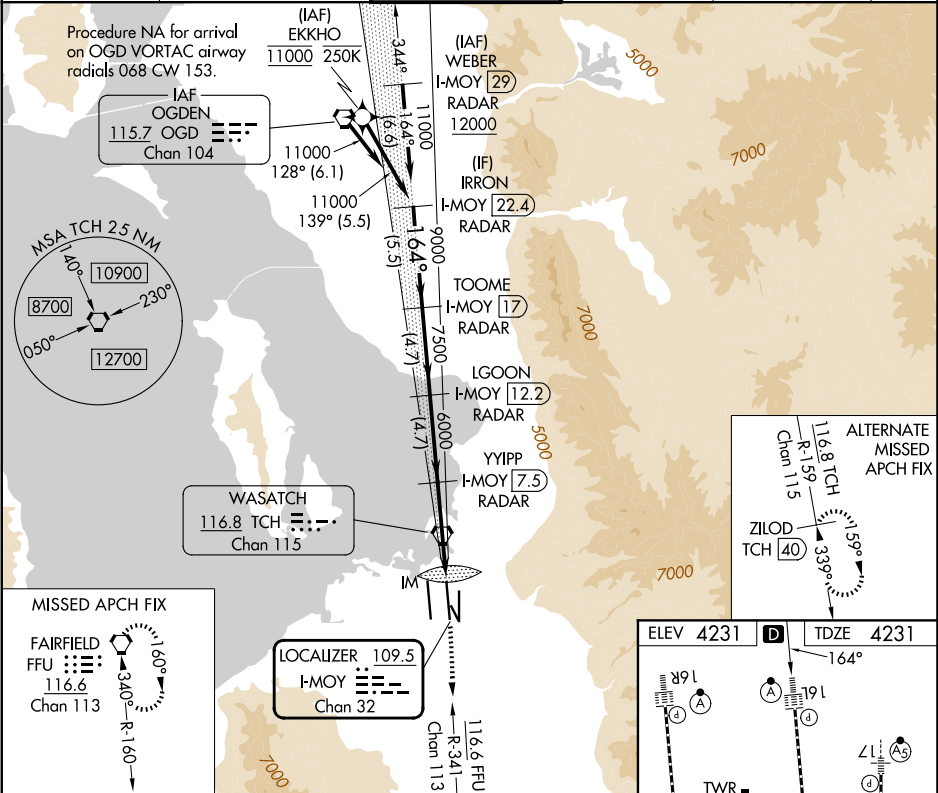
LOC/DME I-MOY 109.5 Chan 32	APP CRS 164°	Rwy Ldg 12002 TDZE 4231 Apt Elev 4231
---	------------------------	--

ILS or LOC RWY 16L

SALT LAKE CITY INTL (SLC)

RNP APCH - GPS. From EKKHO. DME or RADAR required.	ALSF-2 	MISSED APPROACH: Climb to 4800 then climb to 10000 on FFU VORTAC R-341 to FFU VORTAC and hold.
Simultaneous approach authorized. For inop ALS, increase S-LOC 16L Cat C/D visibility to 1½ SM.		

D-ATIS 124.75 125.625	SALT LAKE CITY APP CON 125.7 284.6	SALT LAKE CITY TOWER 119.05 257.8	GND CON 123.775 348.6	CLNC DEL 127.3 379.975	CPDLC
---------------------------------	--	---	---------------------------------	----------------------------------	-------



IRON I-MOY 22.4 RADAR	TOOME I-MOY 17 RADAR	LGOON I-MOY 12.2 RADAR	YYIPP I-MOY 7.5 RADAR	4800	10000	FFU
VGSi and ILS glidepath not coincident (VGSi Angle 3.00/TCH 70).						
GS 3.00° TCH 55						
5.5 NM 4.7 NM 4.7 NM 4.1 NM 1.2 0.1						
CATEGORY	A	B	C	D		
S-ILS 16L	4431/18 200 (200-½)					
S-LOC 16L	4720/24 489 (500-½) 4720/50 489 (500-1)					
HIRL all Rwy TDZ/CL Rwy 16L, 16R, 17, 34L, 34R and 35						
FAF to MAP 5.4 NM						
Knots 60 90 120 150 180						
Min:Sec 5:24 3:36 2:42 2:10 1:48						