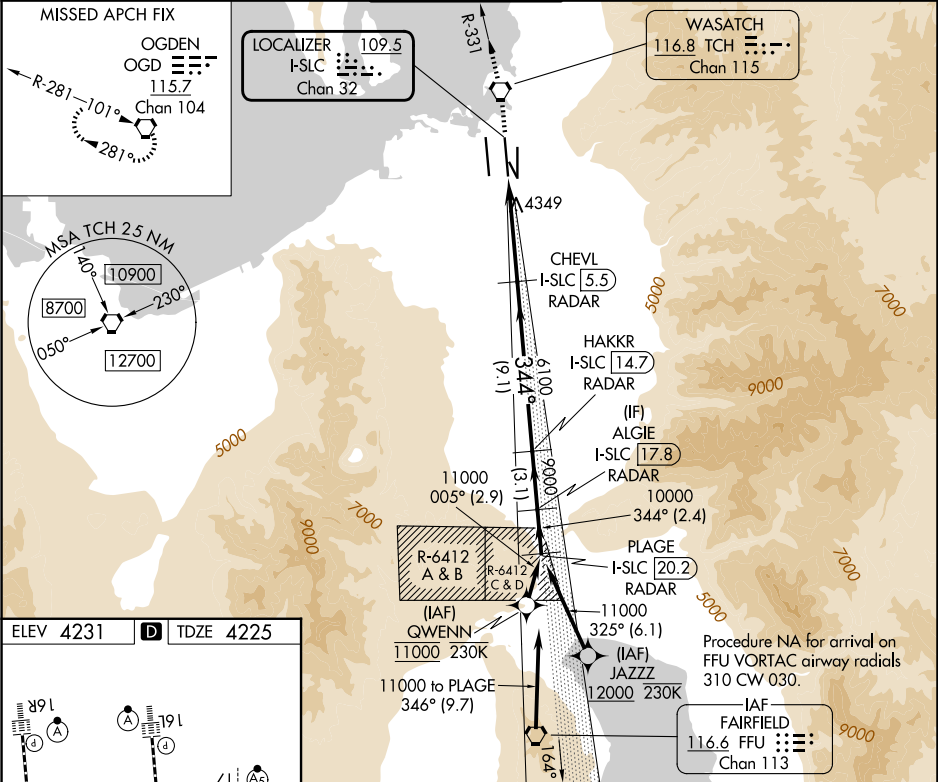


| | | | |
|---|------------------------|---|--|
| LOC/DME I-SLC 109.5 Chan 32 | APP CRS 344° | Rwy Ldg TDZE 4225 Apt Elev 4231 | ILS RWY 34R (SA CAT I) SALT LAKE CITY INTL (SLC) |
|---|------------------------|---|--|

| | | |
|---|------------|--|
| RNP APCH - GPS. From QWENN or JAZZ. | ALSF-2 | MISSED APPROACH: Climb to 9000 direct TCH VORTAC and on TCH VORTAC R-331 to OGD VORTAC and hold. |
| DME or RADAR required. | | |
| Simultaneous approach authorized. Requires specific OPSPEC, MSPEC, or LOA approval. | | |

| | | | | | |
|---------------------------------|--|---|---------------------------------|----------------------------------|-------|
| D-ATIS 124.75 125.625 | SALT LAKE CITY APP CON 125.7 284.6 | SALT LAKE CITY TOWER 119.05 257.8 | GND CON 123.775 348.6 | CLNC DEL 127.3 379.975 | CPDLC |
|---------------------------------|--|---|---------------------------------|----------------------------------|-------|



| | | |
|---|------------------------------|---|
| ELEV 4231 | D | TDZE 4225 |
| 12000 X 150 34L 34R 35L 35R | | |
| HIRL all Rwys TDZ/CL Rwys 16L, 16R, 17, 35, 34L, and 34R | | |
| 9000 TCH | OGD | VGSI and ILS glidepath not coincident (VGSI Angle 3.00/TCH 73). |
| TCH R-331 | CHEVL I-SLC 5.5 RADAR | HAKKR I-SLC 14.7 RADAR |
| | ALGIE I-SLC 17.8 RADAR | PLAGE I-SLC 20.2 RADAR |
| | 6100 | 9000 |
| | 6100 | 10000 |
| | 344° | 11000 |
| | 1045° | 5.7 NM |
| | 9.1 NM | 3.1 NM |
| | 2.4 NM | |
| CATEGORY | A | B |
| C | D | |
| S-ILS 34R RA 149/14 150 DA 4375 | | |
| SA CATEGORY I ILS - SPECIAL AIRCREW & AIRCRAFT CERTIFICATION REQUIRED | | |

SW-4, 07 AUG 2025 to 04 SEP 2025

SW-4, 07 AUG 2025 to 04 SEP 2025