


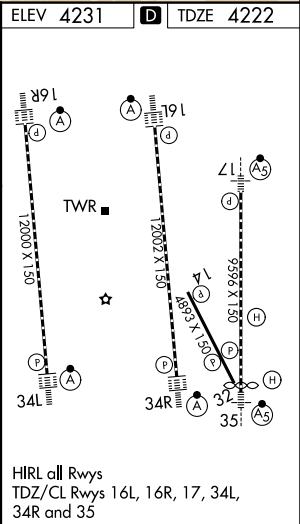
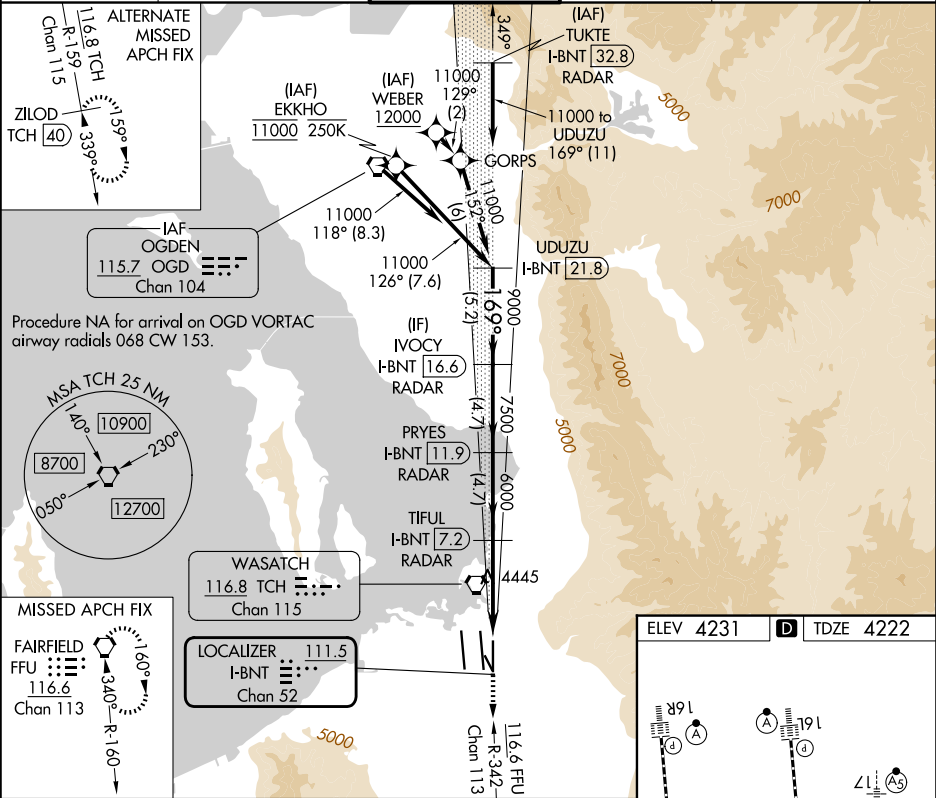
LOC/DME I-BNT	APP CRS	Rwy Ldg	9596
111.5	169°	TDZE	4222
Chan 52		Apt Elev	4231


ILS RWY 17 (SA CAT I & II)

SALT LAKE CITY INTL (SLC)

From WEBER, EKKHO: RNAV 1-GPS required.		MALSR 	MISSED APPROACH: Climb to 10000 on FFU R-342 to FFU VORTAC and hold.
DME or RADAR required.			
▼ Simultaneous approach authorized. SA CAT I: Requires specific OPSPEC, MSPEC, or LOA approval and use of HUD to DH. SA CAT II: Reduced lighting: Requires specific OPSPEC, MSPEC, or LOA approval and use of autoland or HUD to touchdown.			

D-ATIS	SALT LAKE CITY APP CON	SALT LAKE CITY TOWER	GND CON	CLNC DEL	CPDLC
124.75 125.625	125.7 284.6	118.3 257.8	121.9 348.6	127.3 379.975	



UDUZU I-BNT 21.8		IVOCY I-BNT 16.6 RADAR		VGS1 and ILS glidepath not coincident (VGS1 Angle 3.00/TCH 73).		10000 ↑ FFU R-342		FFU 	
11000		9000		7500		6000			
GS 3.00° TCH 55		5.2 NM		4.7 NM		4.7 NM		5.4 NM	
CATEGORY		A		B		C		D	
S-ILS 17		SA CAT I		RA 150/14 150		DA 4372			
S-ILS 17		SA CAT II		RA 100/12 100		DA 4322			
SA CATEGORY I & II ILS - SPECIAL AIRCREW & AIRCRAFT CERTIFICATION REQUIRED									