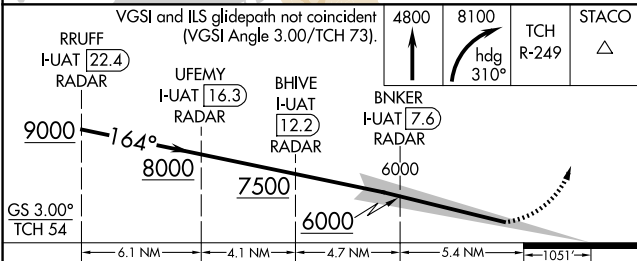
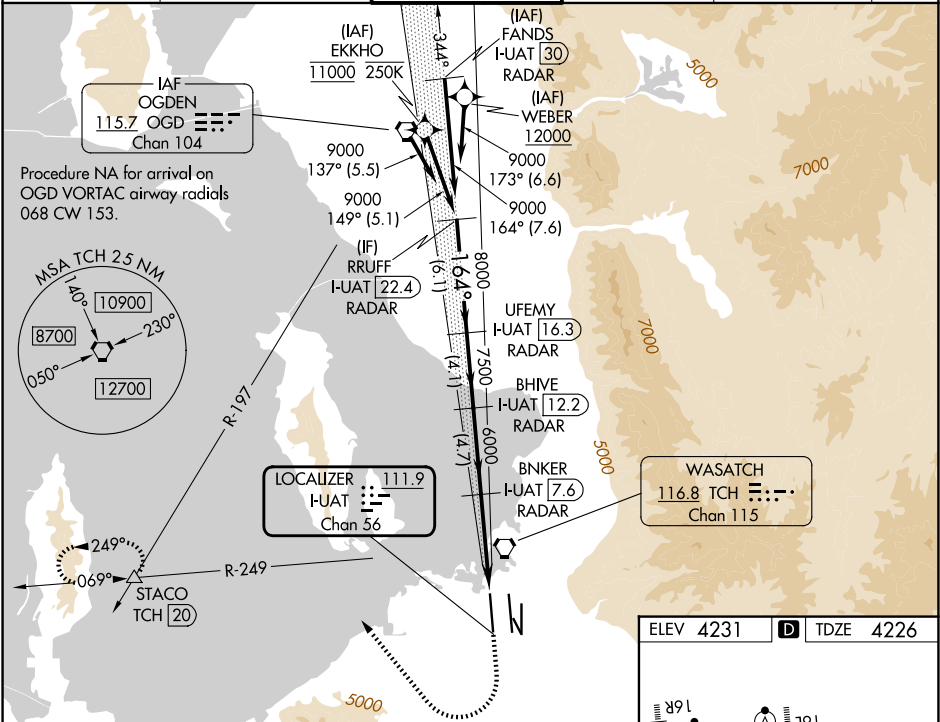


LOC/DME I-UAT <b>111.9</b> Chan <b>56</b>	APP CRS <b>164°</b>	Rwy Ldg TDZE <b>4226</b> Apt Elev <b>4231</b>
---	------------------------	---

ILS RWY 16R (CAT II & III)  
SALT LAKE CITY INTL (SLC)

RNP APCH - GPS. From EKKHO or WEBER. DME or RADAR required.	ALSF-2 	MISSED APPROACH: Climb to 4800 then climbing right turn to 8100 on heading 310° and on TCH VORTAC R-249 to STACO INT/TCH 20 DME and hold.
Simultaneous approach authorized. CAT II: RVR 1000 authorized with specific OPSPEC, MSPEC, or LOA approval and use of autoland or HUD to touchdown.		

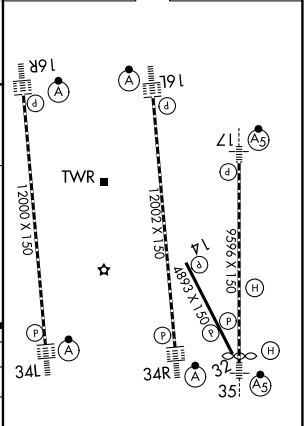
D-ATIS <b>124.75 125.625</b>	SALT LAKE CITY APP CON <b>125.7 284.6</b>	SALT LAKE CITY TOWER <b>132.65 336.4</b>	GND CON <b>123.775 348.6</b>	CLNC DEL <b>127.3 379.975</b>	CPDLC
---------------------------------	--	---	---------------------------------	----------------------------------	-------



CATEGORY	A	B	C	D
S-ILS 16R	CAT II RA 104/12 100 DA 4326			
S-ILS 16R	CAT III RVR 03			

CATEGORY II & III ILS - SPECIAL AIRCREW  
& AIRCRAFT CERTIFICATION REQUIRED

ELEV 4231	TDZE 4226
-----------	-----------



HIRL all Rwys  
TDZ/CL Rwys 16L, 16R, 17, 34L,  
34R, and 35