

APP CRS

Rwy Idg

5608

084°

TDZE

76

Apt Elev

84

RNAV (GPS) RWY 8

SALINAS MUNI (SNS)

RNP APCH-GPS.

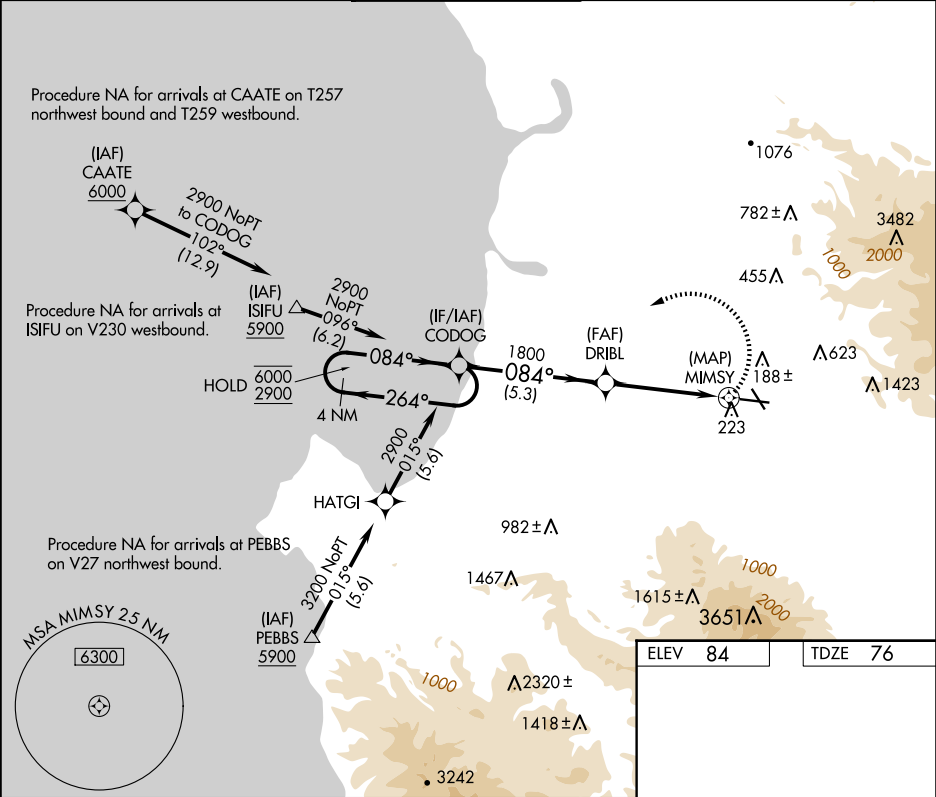
⚠

Circling Cat C/D NA northeast of Rwy 13 and north of Rwy 26.

MISSED APPROACH: (Do not exceed 185K until CODOG)

Climbing left turn to 2900 direct CODOG and hold, continue climb-in-hold to 2900.

ATIS 124.85	NORCAL APP CON 133.0 251.15	SALINAS TOWER ★ 119.525 (CTAF) 239.3	GND CON 121.7	UNICOM 123.0
----------------	--------------------------------	---	------------------	-----------------



4 NM Holding Pattern

CODOG

DRIBL

2900 CODOG

6000 2900

264° 084°

084°

1800

3.19° TCH 53

1.5 NM to MIMSY

MIMSY

5.3 NM 3 NM 1.5 0.5

CATEGORY

A

B

C

D

LNVA MDA

760-1 684 (700-1)

760-2 684 (700-2)

CIRCLING

760-1 676 (700-1)

800-2 716 (800-2)

1680-3 1596 (1600-3)

HIRL Rwy 13-31

MIRL Rwy 8-26

REIL Rws 13 and 26