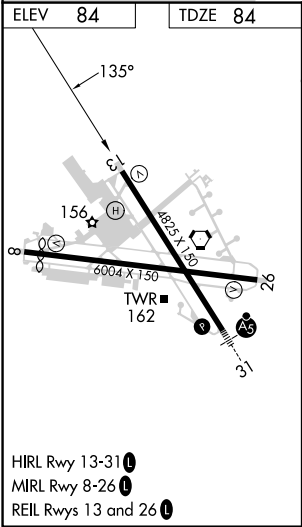
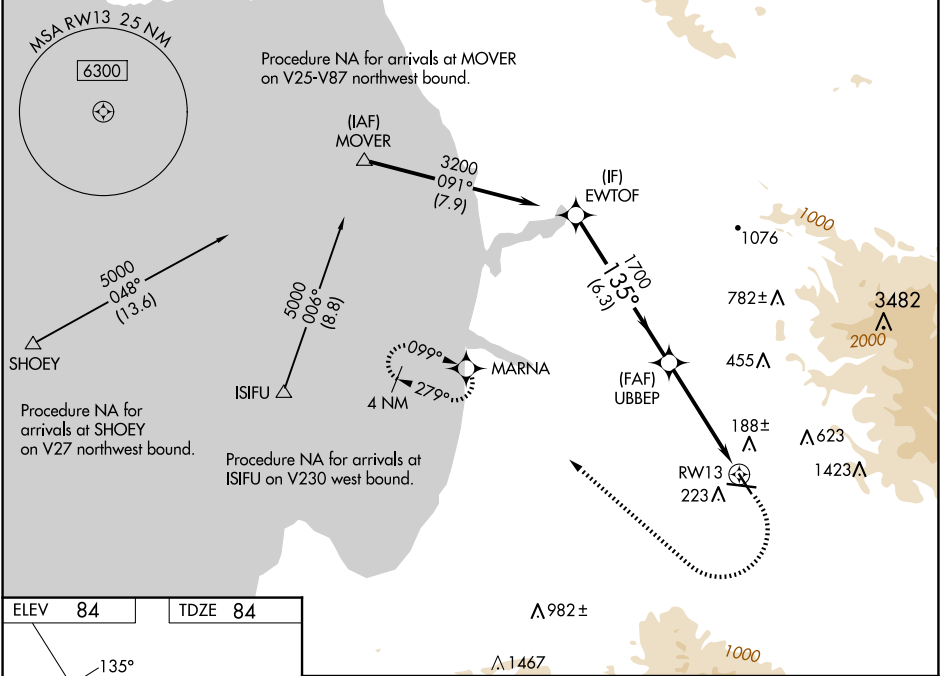


WAAS CH 57944 W13A	APP CRS 135°	Rwy Idg 4825 TDZE 84 Apt Elev 84
--	------------------------	---

RNAV (GPS) RWY 13
SALINAS MUNI (SNS)

RNP APCH - GPS.	MISSED APPROACH: (Do not exceed 185K until MARN A). Climb to 600, then climbing right turn to 3000 direct MARN A and hold, continue climb-in-hold to 3000.
▼ Rwy 13 helicopter visibility reduction below ¾ SM NA. For uncompensated Baro-VNAV systems, LNAV/VNAV NA below 1°C or above 54°C. Circling NA for Cat C northeast of Rwy 13 and north of Rwy 26. Circling NA for Cat D northeast of Rwy 13-31.	

ATIS 124.85	NORCAL APP CON 133.0 251.15	SALINAS TOWER ★ 119.525 (CTAF) 239.3	GND CON 121.7	UNICOM 123.0
-----------------------	---------------------------------------	--	-------------------------	------------------------



EWTOF		600		3000		MARN A			
3200		1700		1.4 NM to RW13		RW13			
GP 3.12°									
TCH 50									
		6.3 NM		3.3 NM		1.4 NM			
CATEGORY		A		B		C		D	
LPV DA		334-¾ 250 (300-¾)							
LNAV/VNAV DA		447-1 363 (400-1)				463-1 379 (400-1)		488-1½ 404 (500-1½)	
LNAV MDA		580-1 496 (500-1)				580-1¾ 496 (500-1¾)			
CIRCLING		580-1 496 (500-1)				800-2 716 (800-2)		1620-3 1536 (1600-3)	