


LOC I-SLN	APP CRS	Rwy Ldg	12300
108.9	353°	TDZE	1271
		Apt Elev	1288

ILS or LOC RWY 35

SALINA RGNL (SLN)

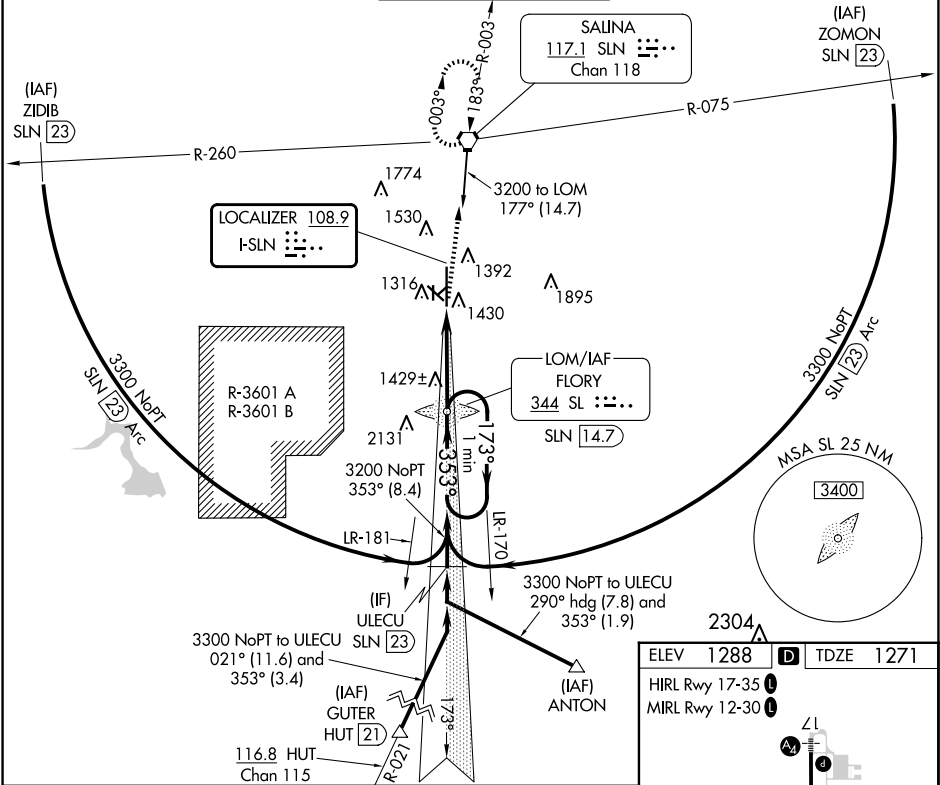
**⚠** For inop ALS, increase S-LOC 35 Cat D visibility to 1½ SM and Cat E visibility to 1½ SM. For inop ALS, increase S-ILS 35 Cat E visibility to ¾ SM. Circling NA for Cats D and E southwest of Rwy 12-30.

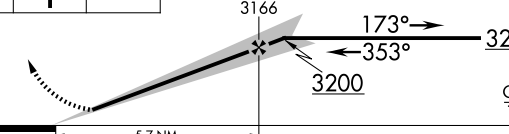
**MALSR**

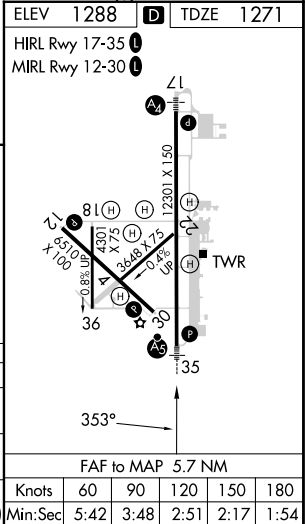


**MISSED APPROACH:** Climb to 1700 then climb to 3000 direct SLN VORTAC and hold.

ATIS	KANSAS CITY CENTER	SALINA TOWER ★	GND CON	UNICOM
120.15	134.9 363.2	119.3 (CTAF) 0 257.7	121.9 360.8	122.95



1700	3000	SLN	SL IOM SLN 14.7				One Minute Holding Pattern	
↑	↑	⬡					3200	
CATEGORY		A	B	C	D	E	GS 3.00° TCH 48	
S-ILS 35		1471-½ 200 (200-½)						
S-LOC 35		1680-½ 409 (400-½)						
CIRCLING		1820-1 532 (600-1)	1840-1 552 (600-1)	1860-1½ 572 (600-½)	1860-2 572 (600-2)	1920-2¼ 632 (700-2¼)		



SALINA RGNL (SLN)

ILS or LOC RWY 35