

WAAS CH 86202 W31A	APP CRS 313°	Rwy Idg 5811 TDZE 214 Apt Elev 214
--	------------------------	---

RNAV (GPS) RWY 31
MCNARY FLD (SLE)

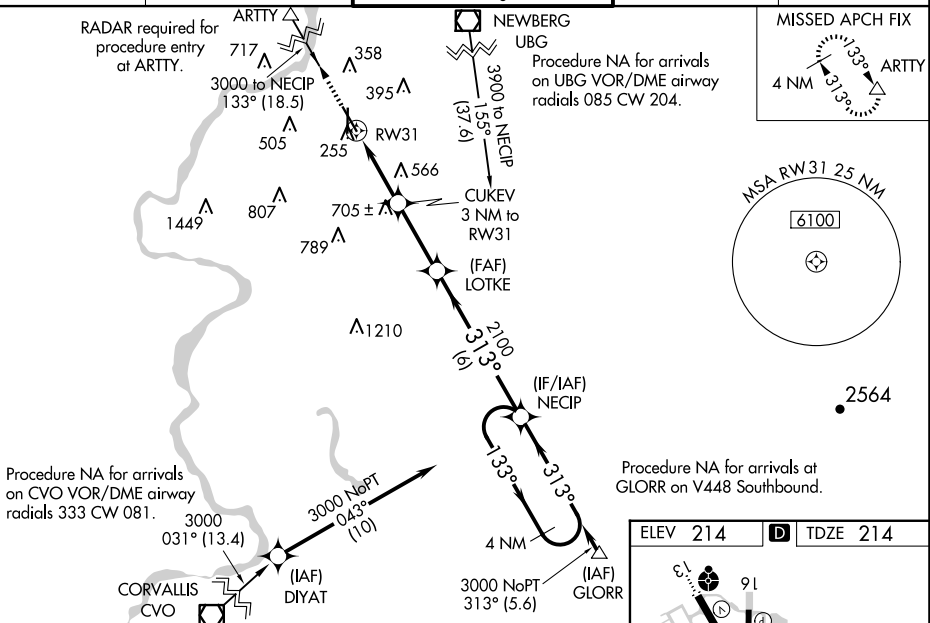
RNP APCH.

For uncompensated Baro-VNAV systems, LNAV/VNAV NA below -15°C or above 54°C When local altimeter setting not received, use Mc Minnville altimeter setting and increase all DA 49 feet; increase all MDAs 60 feet; increase LNAV/VNAV visibility all Cats to 1 ½ SM, LNAV Cat C and D visibility to 2 SM, and Circling Cat A visibility to 1¼ SM and Cat C visibility to 2¼ SM. Baro-VNAV and VDP NA when using Mc Minnville altimeter setting. For inop ALS increase LNAV/VNAV all Cats visibility to 1 ½ SM and increase LNAV Cat C and D visibility to 2½ SM. For inop ALS when using Mc Minnville altimeter setting, increase LPV all Cats visibility to 4500, increase LNAV/VNAV all Cats visibility to 2 SM, increase LNAV Cats C and D visibility to 2½ SM. **RVR 1800 authorized with use of FD or AP or HUD to DA, NA when using Mc Minnville altimeter setting.

MALSR
A5

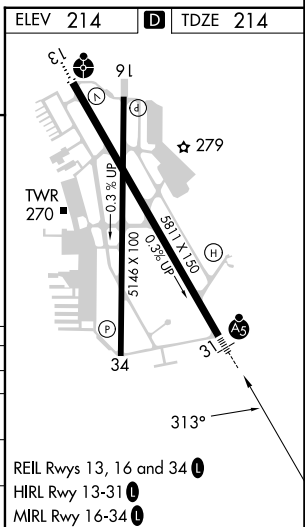
MISSED APPROACH:
Climb to 3700 direct
ARTTY and hold,
continue climb-in-hold
to 3700.

ATIS 124.55	SEATTLE CENTER 125.8 291.7	SALEM TOWER ★ 119.1 (CTAF) 0 257.2	GND CON 121.9	UNICOM 122.95
----------------	-------------------------------	---------------------------------------	------------------	------------------



The diagram illustrates a flight profile with the following details:

- Initial Climb:** From 3700 ft to ARTTY (indicated by a compass rose symbol).
- Climb Segment:** *LNAV only, distance 2.2 NM, altitude 2100 ft.
- Descent Segment:** *2.2 NM to RW31, distance 0.8 NM, altitude 2100 ft.
- Level Segment:** *1200 ft, distance 2.8 NM, ending at LOTKE.
- Final Descent:** Distance 6 NM, ending at NECIP.
- Holding Pattern:** 4 NM Holding Pattern, starting at NECIP, with a turn angle of 133° and a distance of 3000 ft.
- GP 3.00° TCH 42**



RNAV (GPS) RWY 31