

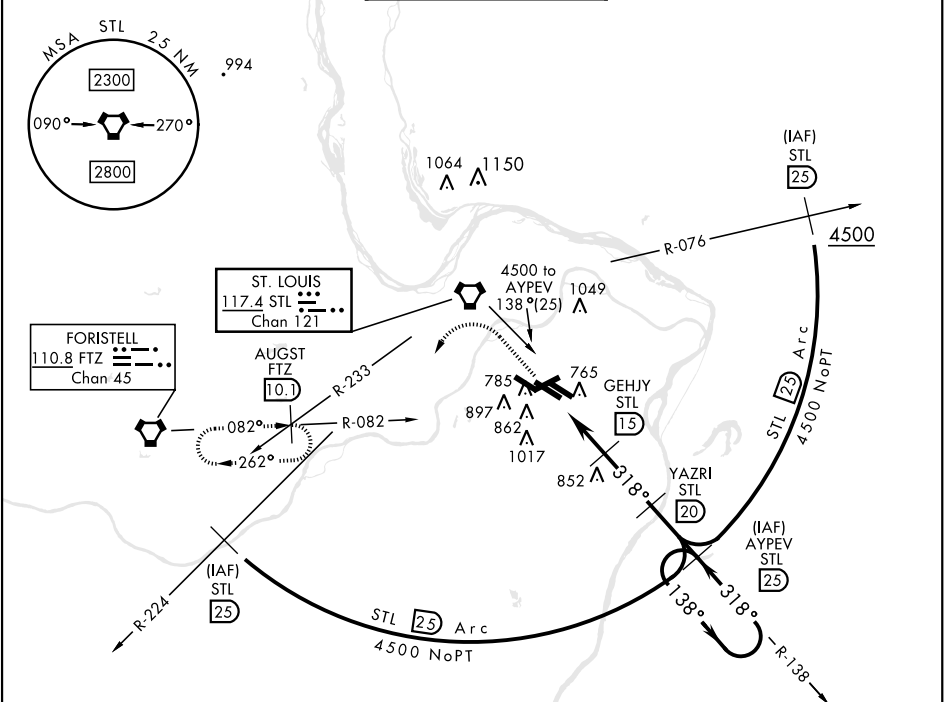
ST. LOUIS, MISSOURI

VORTAC STL 117.4 Chan 121	APCH CRS 318°	Rwy ldg 10,679 TDZE 583 Arpt Elev 618
---------------------------------	------------------	---------------------------------------------

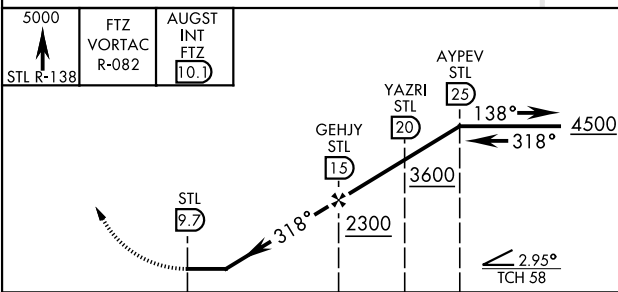
[USAF]

TACAN RWY 30L  
ST. LOUIS LAMBERT INTL (KSTL)

* Inoperative table does not apply.		MALSR A5	MISSED APPROACH: Climb to 5000 via STL R-138 and FTZ VORTAC R-082 to AUGST INT/FTZ 10.1 DME and hold.	
ATIS 125.025 379.925	ST. LOUIS APP CON 121.02 338.25	N 120.05 284.6	ST. LOUIS TOWER W 132.475 239.275	S 118.5 257.7
		(Inbnd) (Outbnd) (West)	GND CON 121.9 348.6 121.65 377.175 118.925 227.125	CLNC DEL 119.5 363.1



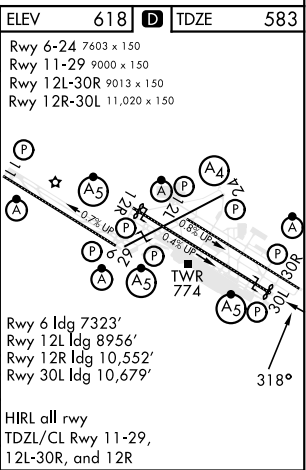
EMERG SAFE ALT 100 NM 3500



CATEGORY	A	B	C	D	E
S-30L*	1100/50	517 (500-1)	1100-1½ 517(500-1½)	1100-1¾ 517 (500-1¾)	
CIRCLING	NOT AUTHORIZED				

ST. LOUIS, MISSOURI  
Amdt 1 25107

38°45'N-90°22'W



ST. LOUIS LAMBERT INTL (KSTL)

TACAN RWY 30L

NC-3, 07 AUG 2025 to 04 SEP 2025

NC-3, 07 AUG 2025 to 04 SEP 2025