


## TACAN RWY 12R

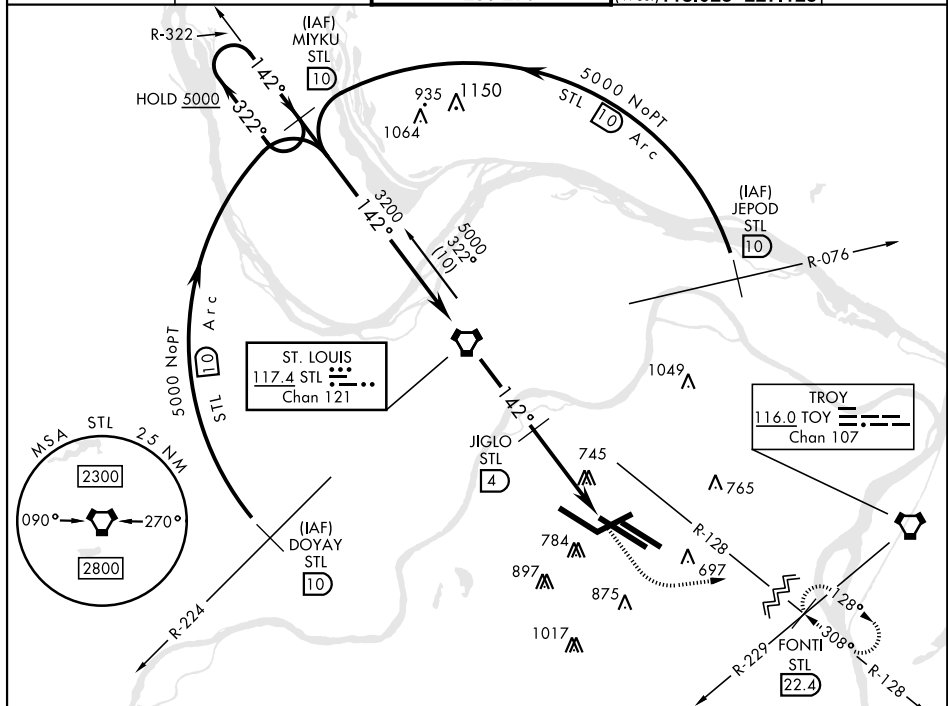
VORTAC STL <b>117.4</b> Chan <b>121</b>	APCH CRS <b>142°</b>	Rwy Idg <b>10,552</b> TDZE <b>540</b> Arpt Elev <b>618</b>
---	-------------------------	--

[USAF]

ST. LOUIS LAMBERT INTL (KSTL)

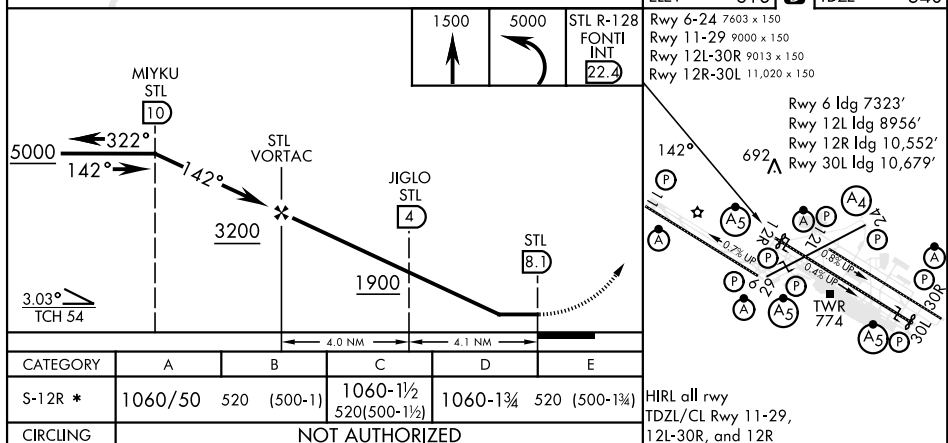
<p>▼ ▲ NA</p> <p>* Inoperative table does not apply. Visibility reduction by helicopters not authorized.</p>	<p>MALSR</p> 	<p>MISSED APPROACH: Climb to 1500 then climbing left turn to 5000 intercept STL VORTAC R-128 to FONTI INT/STL 22.4 DME and hold, continue climb in hold.</p>
--	--	--

ATIS		ST. LOUIS APP CON		ST. LOUIS TOWER		GND CON		CLNC DEL	
125.025	379.925	121.02	338.25	120.05	132.475	118.5	121.9	348.6	119.5
				284.6	239.275	257.7	121.65	377.175	363.1
							(Inb'd)		
							(Outb'd)		
							(West)	118.925	227.125



EMERG SAFE ALT 100 NM 3500

ELEV	618	<b>D</b>	TDZE	540
------	-----	----------	------	-----



ST. LOUIS, MISSOURI

38°45'N-90°22'W

ST. LOUIS LAMBERT INTL (KSTL)

Amdt 1 25107

TACAN RWY 12R

NC-3, 07 AUG 2025 to 04 SEP 2025