
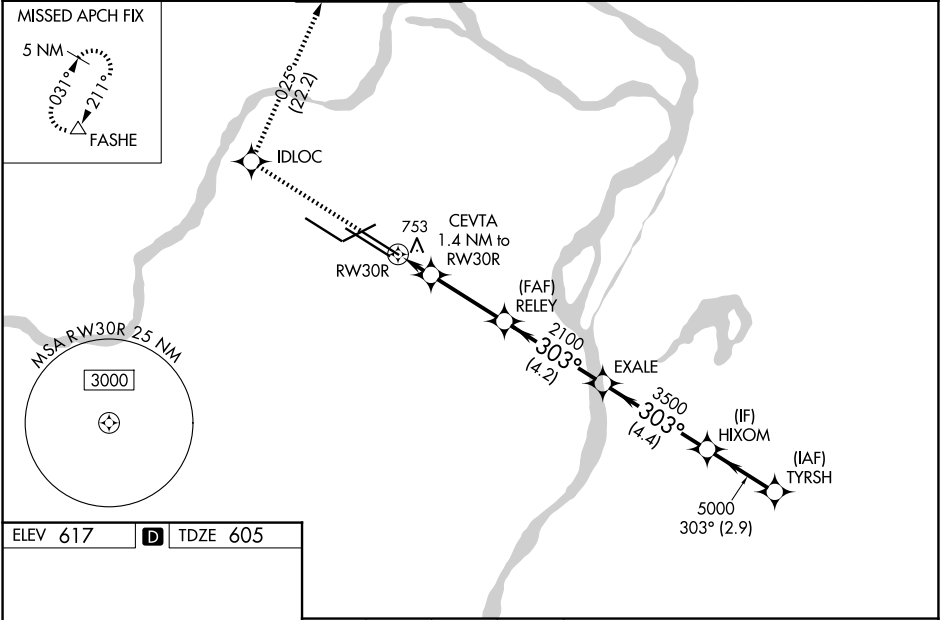


WAAS CH 73000 W30A	APP CRS 303°	Rwy Ldg TDZE Apt Elev	9013 605 617
--	------------------------	-----------------------------	---

RNAV (GPS) Y RWY 30R
ST LOUIS LAMBERT INTL (STL)

RNP APCH - GPS.			ALSF-2 	MISSED APPROACH: Climb to 3000 direct IDLOC and on track 025° to FASHE and hold.
RADAR required for procedure entry.				
<div>▼</div> For uncompensated Baro-VNAV systems, LNAV/VNAV NA below -15°C or above 54°C. LNAV procedure NA during simultaneous operations. Use of FD or AP required during simultaneous operations. Simultaneous approach authorized with Rwy 29. For inop ALS, increase LPV Cat E visibility to RVR 4000, LNAV/VNAV all Cats visibility to RVR 4500, LNAV Cat C/D/E visibility to RVR 6000.				
D-ATIS 125.025 379.925	ST. LOUIS APP CON 132.125 360.6	ST. LOUIS TOWER 120.05 284.6	GND CON 121.9 348.6 (Inbound) 121.65 377.175 (Outbound) 118.925 227.125 (Rwy 11/29)	CLNC DEL 119.5 363.1 CPDLC



ELEV 617	D	TDZE 605
Rwy 6-24 7603 X 150 Rwy 11-29 9000 X 150 Rwy 12L-30R 9013 X 150 Rwy 12R-30L 11020 X 150		3000 IDLOC FASHE ↑ tr 025° △
RWY 30R CEVTA 1.4 NM to RWY 30R RELEY 2100 EXALE 3500 HIXOM 5000 TYRSH 5000 GP 3.00° TCH 57		1.4 3.1 NM 4.2 NM 4.4 NM 2.9 NM
CATEGORY		A B C D E
LPV DA		805/18 200 (200-½)
LNAV/VNAV DA		914/24 309 (300-½)
LNAV MDA		1020/24 415 (500-½) 1020/40 415 (500-¾)

NC-3, 07 AUG 2025 to 04 SEP 2025

NC-3, 07 AUG 2025 to 04 SEP 2025