


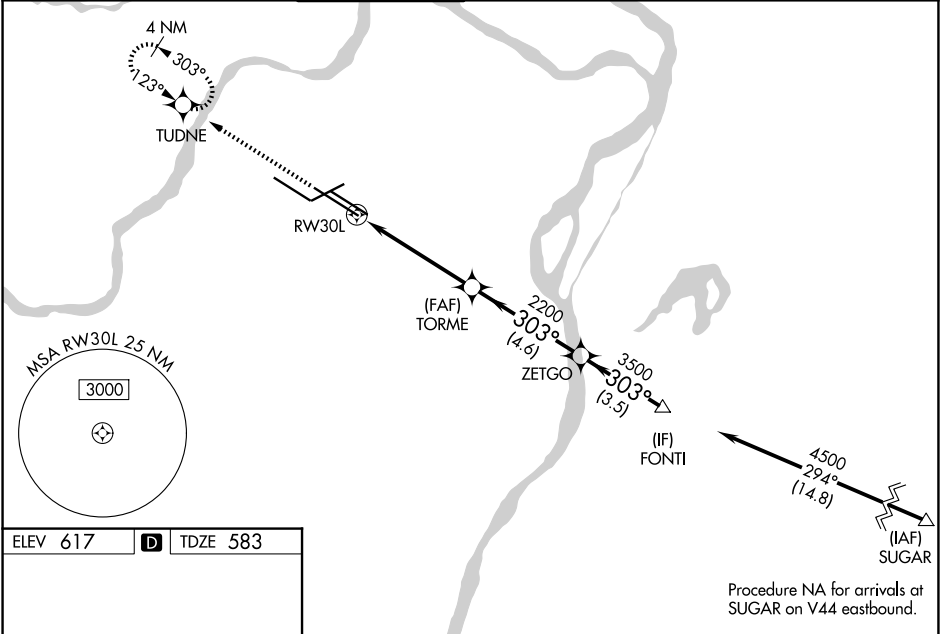
WAAS CH 99621 W30B	APP CRS 303°	Rwy Ldg 10679 TDZE 583 Apt Elev 617
--	------------------------	--

RNAV (GPS) Y RWY 30L

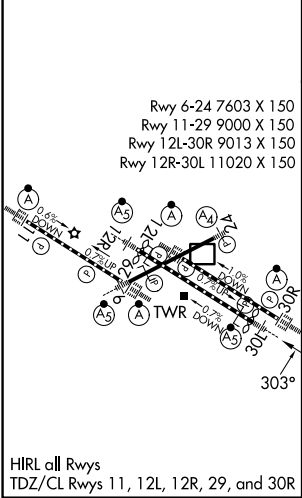
ST LOUIS LAMBERT INTL (STL)

RNP APCH - GPS.		<div>MALSR</div> <div></div>	<div>MISSED APPROACH: Climb to 3000 direct TUDNE and hold, continue climb-in-hold to 3000.</div>
<div><div><div>▼</div><div>Simultaneous approach authorized with Rwy 29. LNAV procedure NA during simultaneous operations. Use of FD or AP required during simultaneous operations. For uncompensated Baro-VNAV systems, LNAV/VNAV NA below -18°C or above 54°C. Rwy 30L helicopter visibility reduction below RVR 4000 NA. For inop ALS, increase LNAV/VNAV all Cats visibility to RVR 6000 and LNAV Cat A/B visibility to RVR 5500.</div></div><div>* RVR 1800 authorized with use of FD or AP or HUD to DA.</div></div>			

D-ATIS 125.025 379.925	ST. LOUIS APP CON 132.125 360.6	ST. LOUIS TOWER 118.5 257.7	GND CON 121.9 348.6 (Inbound) 121.65 377.175 (Outbound) 118.925 227.125 (Rwy 11/29)	CLNC DEL 119.5 363.1	CPDLC
--	---	---------------------------------------	---	--------------------------------	-------



ELEV 617	D	TDZE 583
-----------------	----------	-----------------



3000 TUDNE		TORME		ZETGO	FONTI
1.5 NM		3.4 NM	4.6 NM	3.5 NM	
CATEGORY	A	B	C	D	
LPV DA*	783/24		200 (200-½)		
LNAV/VNAV DA	974/40		391 (400-¾)		
LNAV MDA	1120/40 537 (600-¾)		1120/55 537 (600-1)		

NC-3, 07 AUG 2025 to 04 SEP 2025

NC-3, 07 AUG 2025 to 04 SEP 2025