

ST. LOUIS, MISSOURI

AL-360 (FAA)

25219

|  |                        |   |
|--|------------------------|---|
| WAAS<br>CH <b>42500</b><br><b>W29A</b> | APP CRS<br><b>303°</b> | Rwy Ldg <b>9000</b><br>TDZE <b>580</b><br>Apt Elev <b>618</b> |
|--|------------------------|---|

RNAV (GPS) Y RWY 29  
ST LOUIS LAMBERT INTL (STL)

▼ For uncompensated Baro-VNAV systems, LNAV/VNAV NA below -16°C (4°F) or above 54°C (130°F). Rwy 29 helicopter visibility reduction below ½ SM NA. Simultaneous approach authorized with Rwy 30R/L. LNAV procedure NA during simultaneous operations. Use of FD or AP providing RNAV track guidance required during simultaneous operations. DME/DME RNP-0.3 NA. For inop ALS, increase LPV alt Cats visibility to RVR 6000, increase LNAV/VNAV Cat E visibility to 1½, increase LNAV Cat A and B visibility to 1, Cat E visibility to 1¾.

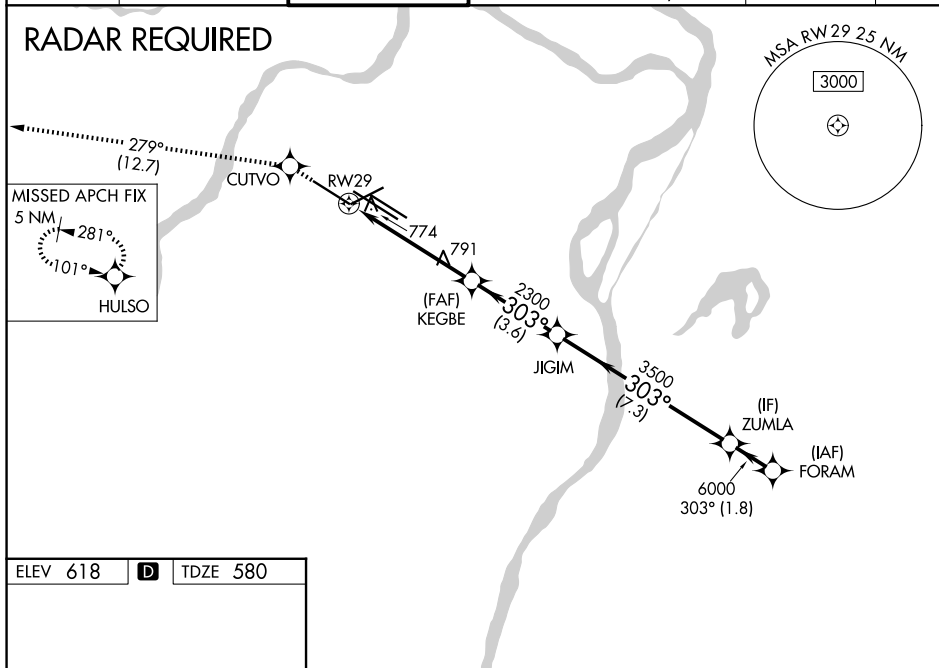
ALSF-2



**MISSED APPROACH:**  
Climb to 3000 direct CUTVO  
and on track 279° to HULSO  
and hold

|                              |                                    |                                    |  |                         |       |
|------------------------------|------------------------------------|------------------------------------|--|-------------------------|-------|
| D-ATIS<br>125.025<br>379.925 | ST. LOUIS APP CON<br>132.125 360.6 | ST. LOUIS TOWER<br>132.475 239.275 | GND CON<br>121.9 348.6 (Inbound)<br>121.65 377.175 (Outbound)<br>118.925 227.125 (Rwy 11/29) | CLNC DEL<br>119.5 363.1 | CPDLC |
|------------------------------|------------------------------------|------------------------------------|--|-------------------------|-------|

## RADAR REQUIRED



ST. LOUIS, MISSOURI

Orig-D 17AUG17

38°45'N-90°22'W

ST LOUIS LAMBERT INTL (STL)

## RNAV (GPS) Y RWY 29

NC-3, 07 AUG 2025 to 04 SEP 2025

NC-3, 07 AUG 2025 to 04 SEP 2025