

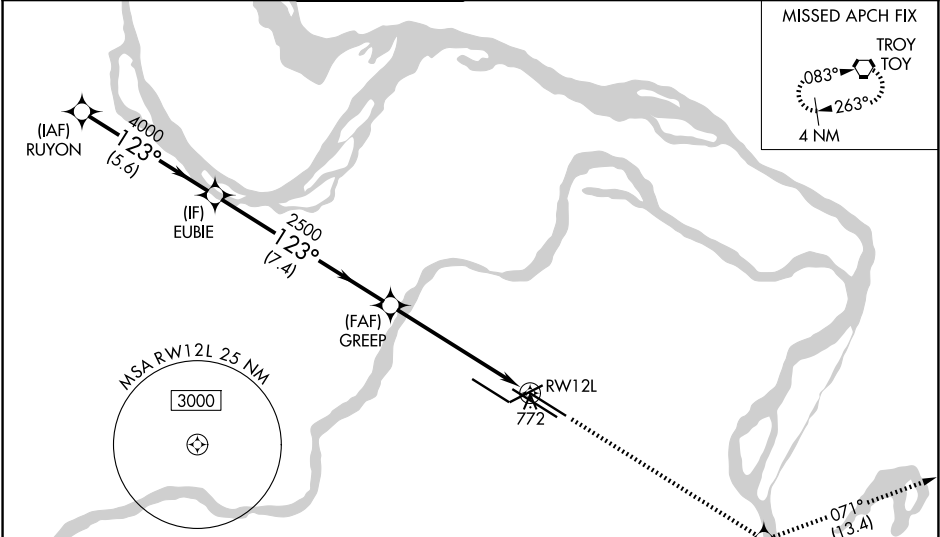


WAAS CH <b>69499</b> <b>W12A</b>	APP CRS <b>123°</b>	Rwy Ldg TDZE <b>541</b> Apt Elev <b>617</b>
--	------------------------	---

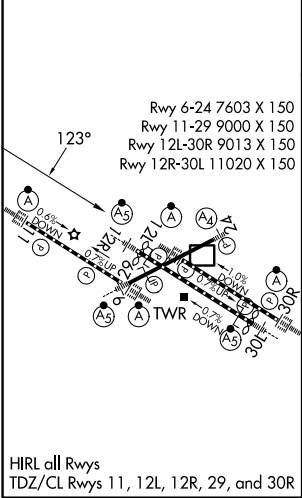
RNAV (GPS) Y RWY 12L  
ST LOUIS LAMBERT INTL (STL)

RNP APCH - GPS.		ALSF-2 	MISSED APPROACH: Climb to 3000 direct ODITY and on track 071° to TOY VORTAC and hold.
RADAR required for procedure entry.			
<div> For uncompensated Baro-VNAV systems, LNAV/VNAV NA below -16°C or above 54°C. Simultaneous approach authorized with Rwy 11. LNAV procedure NA during simultaneous operations. Use of FD or AP required during simultaneous operations. For inop ALS, increase LPV all Cats visibility to RVR 6000, LNAV/VNAV all Cats visibility to 1½ SM, and LNAV Cat C/D/E visibility to 1½ SM.</div>			

D-ATIS <b>125.025</b> <b>379.925</b>	ST. LOUIS APP CON <b>132.125 360.6</b>	ST. LOUIS TOWER <b>120.05 284.6</b>	GND CON <b>121.9 348.6</b> (Inbound) <b>121.65 377.175</b> (Outbound) <b>118.925 227.125</b> (Rwy 11/29)	CLNC DEL <b>119.5 363.1</b>	CPDLC
--	---	--	---	--------------------------------	-------



ELEV 617	<b>D</b>	TDZE 541
----------	----------	----------



VGSI and RNAV glidepath not coincident (VGSI Angle 3.00/TCH 56).					3000	ODITY	tr 071°	TOY
RUYON	EUBIE	GREP	1.4 NM to RW12L	RW12L				
5000	4000	2500						
GP 3.00°								
TCH 54								
	5.6 NM	7.4 NM	4.5 NM	1.4 NM				
CATEGORY	A	B	C	D	E			
LPV DA	951/50 410 (400-1)							
LNAV/VNAV DA	1040/60 499 (500-1¼)							
LNAV MDA	1040/24 499 (500-½)	1040/50 499 (500-1)	1040/60 499 (500-1¼)					