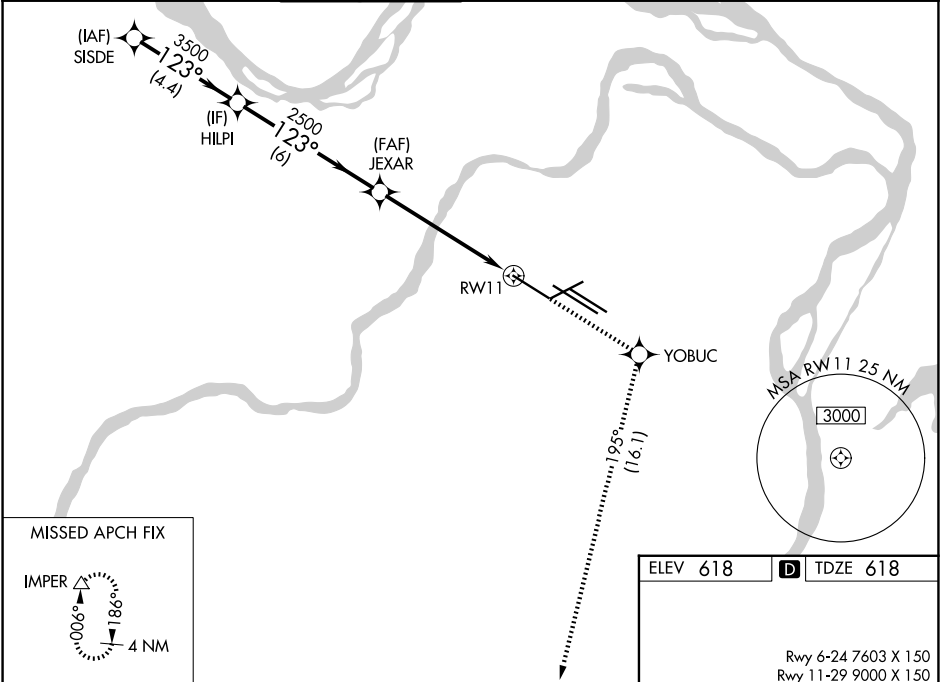


WAAS CH 82699 W11A	APP CRS 123°	Rwy Ldg TDZE Apt Elev	9000 618 618
--	------------------------	-----------------------------	---

RNAV (GPS) Y RWY 11
ST LOUIS LAMBERT INTL (STL)

RNP APCH. ▼ Simultaneous approach authorized. Use of FD or AP required during simultaneous operations. LNAV procedure NA during simultaneous operations. For uncompensated Baro-VNAV systems, LNAV/VNAV NA below -16°C or above 54°C. For inop ALS, increase LPV Cat E visibility to RVR 4000 and LNAV Cat E visibility to 1¼ SM.		ALSF-2 	MISSED APPROACH: Climb to 3000 direct YOBUC and on track 195° to IMPER and hold.	
D-ATIS 125.025 379.925	ST. LOUIS APP CON 132.125 360.6	ST. LOUIS TOWER 132.475 239.275	GND CON 121.9 348.6 (Inbound) 121.65 377.175 (Outbound) 118.925 227.125 (Rwy 11/29)	CLNC DEL 119.5 363.1 CPDLC



VGSI and RNAV glidepath not coincident (VGSI Angle 3.00/TCH 67°).		3000	YOBUC	tr 195°	IMPER
SISDE	HILPI	JEXAR	RW11		
5000	3500	2500			
GP 3.00° TCH 55					
4.4 NM	6 NM	4.5 NM	1.1 NM		
CATEGORY	A	B	C	D	E
LPV DA	868/18 250 (300-½)				
LNAV/VNAV DA	960/40 342 (400-¾)				
LNAV MDA	1040/24 422 (500-½)	1040/40 422 (500-¾)	1040/50 422 (500-1)		

ELEV 618 **D** TDZE 618

Rwy 6-24 7603 X 150
Rwy 11-29 9000 X 150
Rwy 12L-30R 9013 X 150
Rwy 12R-30L 11020 X 150

HIRL all Rwys
TDZ/CL Rwys 11, 12L, 12R, 29, and 30R