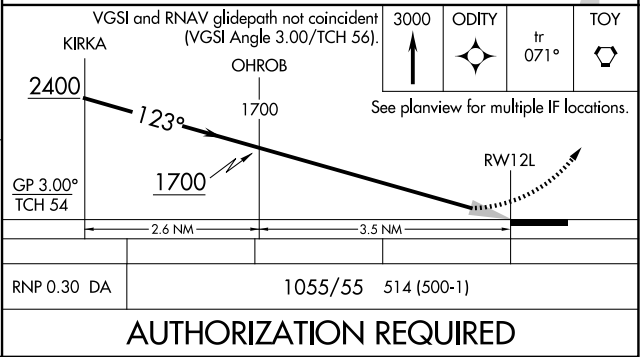
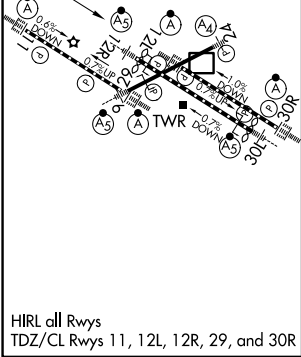
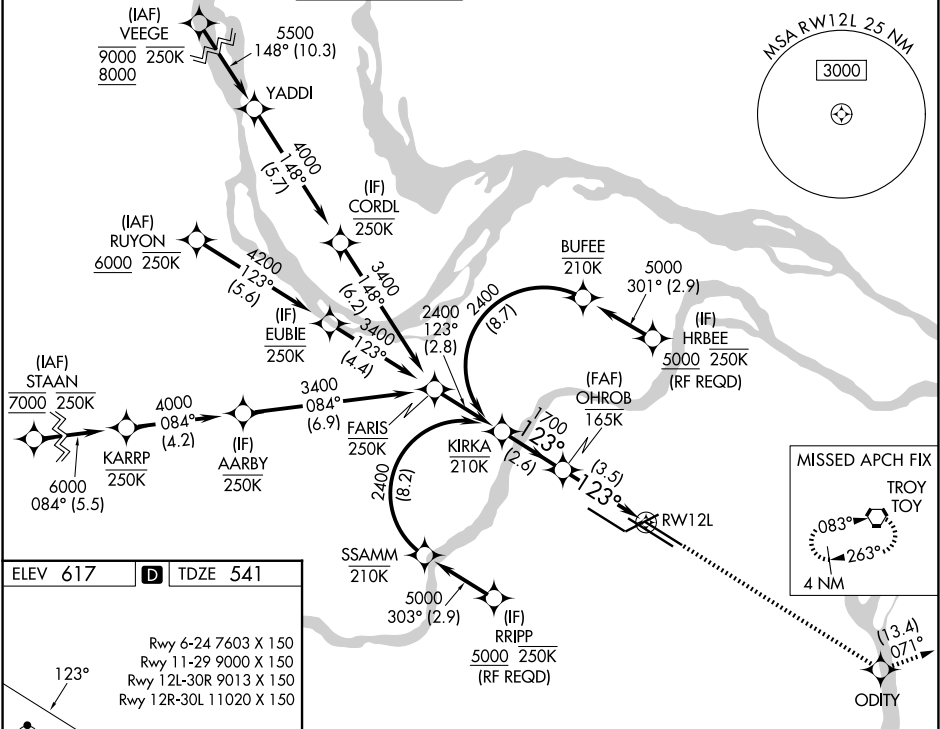


APP CRS	Rwy Ldg	8956
123°	TDZE	541
	Apt Elev	617

RNAV (RNP) Z RWY 12L

ST LOUIS LAMBERT INTL (STL)

RNP AR APCH - GPS. Authorization required from HRBEE or RRIPP: RF.			ALSF-2	<div>MISSED APPROACH: Climb to 3000 direct ODITY and track 071° to TOY VORTAC and hold.</div>	
RADAR required for procedure entry					
<div>▼ Use of FD or AP required during simultaneous operations. Simultaneous approach authorized with Rwy 11, except for arrivals at RRIPP and HRBEE. For uncompensated Baro-VNAV systems, procedure NA below -16°C or above 54°C. For inop ALS, increase RNP 0.30 all Cats visibility to 1½ SM.</div>					
<div>D-ATIS</div> <div>125.025</div> <div>379.925</div>	<div>ST. LOUIS APP CON</div> <div>132.125 360.6</div>	<div>ST. LOUIS TOWER</div> <div>120.05 284.6</div>	<div>GND CON</div> <div>121.9 348.6 (Inbound)</div> <div>121.65 377.175 (Outbound)</div> <div>118.925 227.125 (Rwy 11/29)</div>	<div>CLNC DEL</div> <div>119.5 363.1</div>	<div>CPDLC</div>



NC-3, 07 AUG 2025 to 04 SEP 2025

NC-3, 07 AUG 2025 to 04 SEP 2025