

APP CRS	Rwy Ldg	9000
123°	TDZE	617
	Apt Elev	617

RNAV (RNP) Z RWY 11
ST LOUIS LAMBERT INTL (STL)

RNP AR APCH - GPS, min RNP 0.30. Authorization required from HRBEE or RRIPP: RF.

RADAR required for procedure entry.

T Simultaneous approach authorized with Rwys 12L/R, except for arrivals at RRIPP and HRBEE. Use of FD or AP providing RNAV track guidance required during simultaneous operations. For uncompensated Baro-VNAV systems, procedure NA below -16°C or above 54°C. For inop ALS, increase RNP 0.30 all Cats visibility to RVR 4500.

ALSF-2

MISSED APPROACH: Climb to 1100 then climbing right turn to 3000 direct IMPER and hold.



D-ATIS

125.025
379.925

ST. LOUIS APP CON

132 125 360 6

ST. LOUIS TOWER

132.475 239.275

GND CON

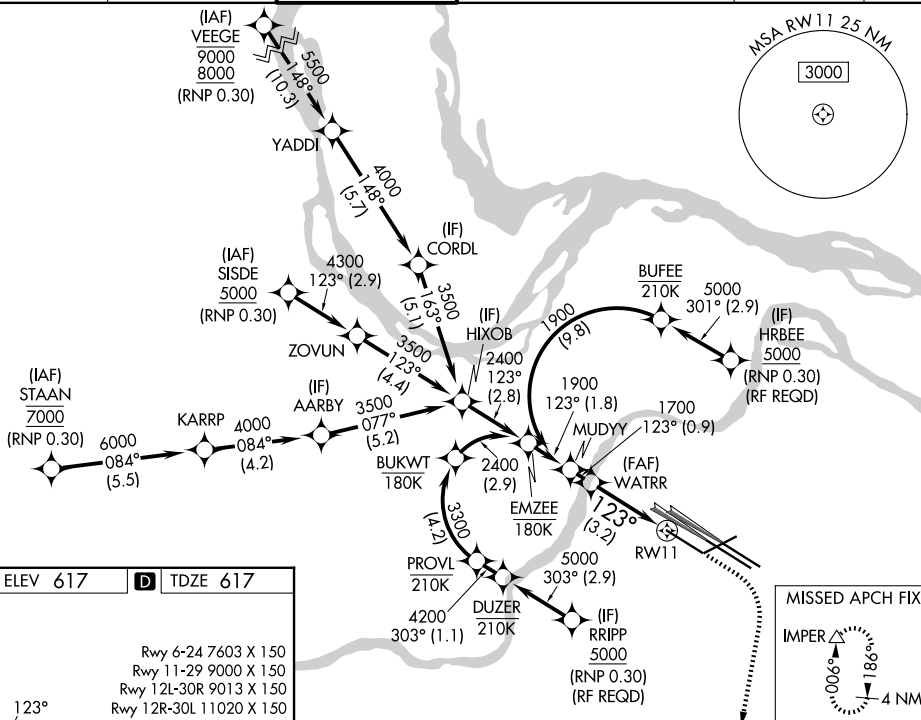
121.9 348.6 (Inbound)

121.65 377.175 (Outbound)

118,925 227,125 (Rwy 11/29)

CLNC DE

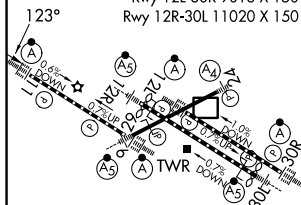
119.5 363.1



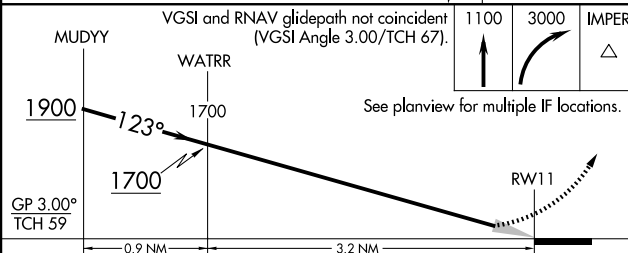
ELEV 617

D TDZE 617

Rwy 6-24 7603 X 150
Rwy 11-29 9000 X 150
Rwy 12L-30R 9013 X 150
Rwy 12R-30L 11020 X 150



VGSI and RNAV glidepath not coincident
(VGSI Angle 3.00/TCH 67).



See planview for multiple IF locations.

CATEGORY

A

1

C

○

RNP 0.30 DA

925/24 308 (400-1/2)

AUTHORIZATION REQUIRED

ST. LOUIS, MISSOURI

Orig-C 17APR25

38°45'N-90°22'W

ST LOUIS LAMBERT INTL (STL)

RNAV (RNP) Z RWY 11