

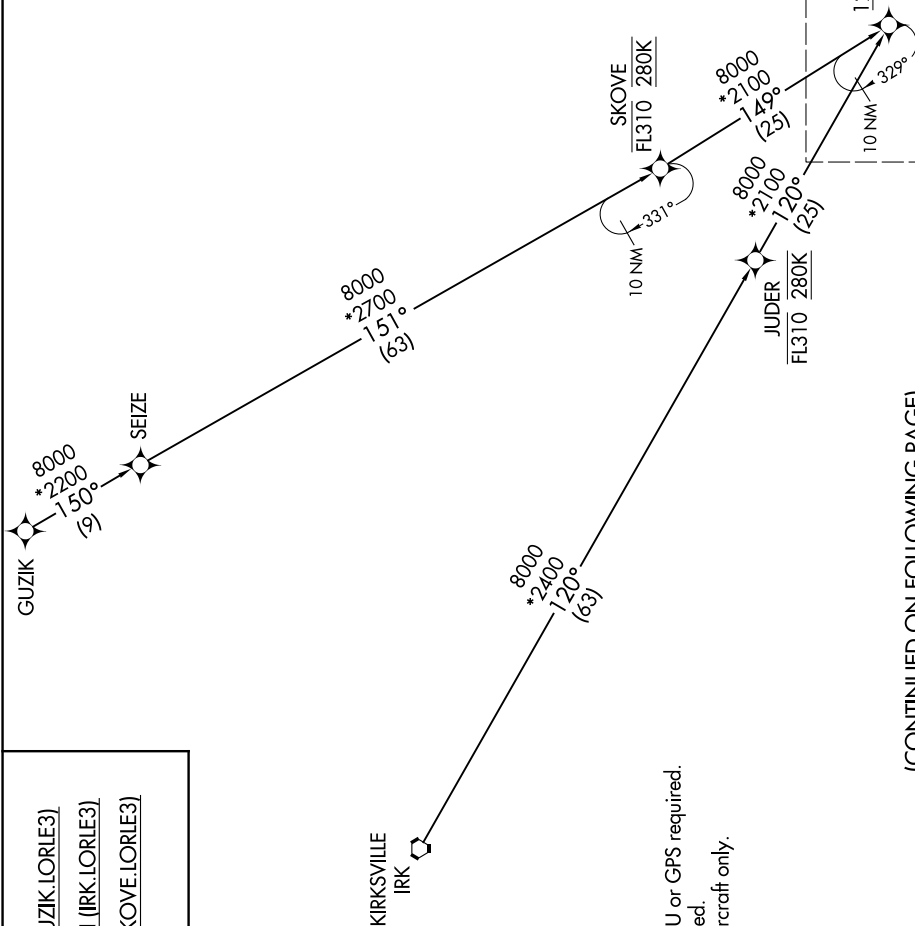
ST LOUIS LAMBERT INTL (STL)
ST. LOUIS, MISSOURI

LORLE THREE ARRIVAL (RNAV) Transition Routes

ST LOUIS APP CON
132.125 360.6
D-ATIS
125.025 379.925

$$Z \leftarrow$$

See following page
for Arrival Routes.



(CONTINUED ON FOLLOWING PAGE)

NC-3, 07 AUG 2025 to 04 SEP 2025

GUZIK TRANSITION (GUZIK.LORLE3)
KIRKSVILLE TRANSITION (IRK.LORLE3)
SKOVE TRANSITION (SKOVE.LORLE3)

NOTE: DME/DME/IRU or GPS required.
NOTE: RADAR required.
NOTE: For turbojet aircraft only.
NOTE: RNAV-1.

NOTE: Chart not to scale.

LORLE THREE ARRIVAL (RNAV) Transition Routes

(LORLE.LORLE3) 07DEC17

ST. LOUIS, MISSOURI
ST. LOUIS LAMBERT INTL (STL)