

**TOP ALTITUDE:**  
**5000**

## TAKEOFF MINIMUMS

Rwy 6: Standard with minimum climb of 500' per NM to 1120.

Rwy 24: Standard with minimum climb of 500' per NM to 1120.

Rwys 11, 12L/R: Standard with minimum climb of 500' per NM to 1120.

Rwy 29: Standard with minimum climb of 500' per NM to 1120.

Rwys 30L/R: Standard with minimum climb of 500' per NM to 1120.

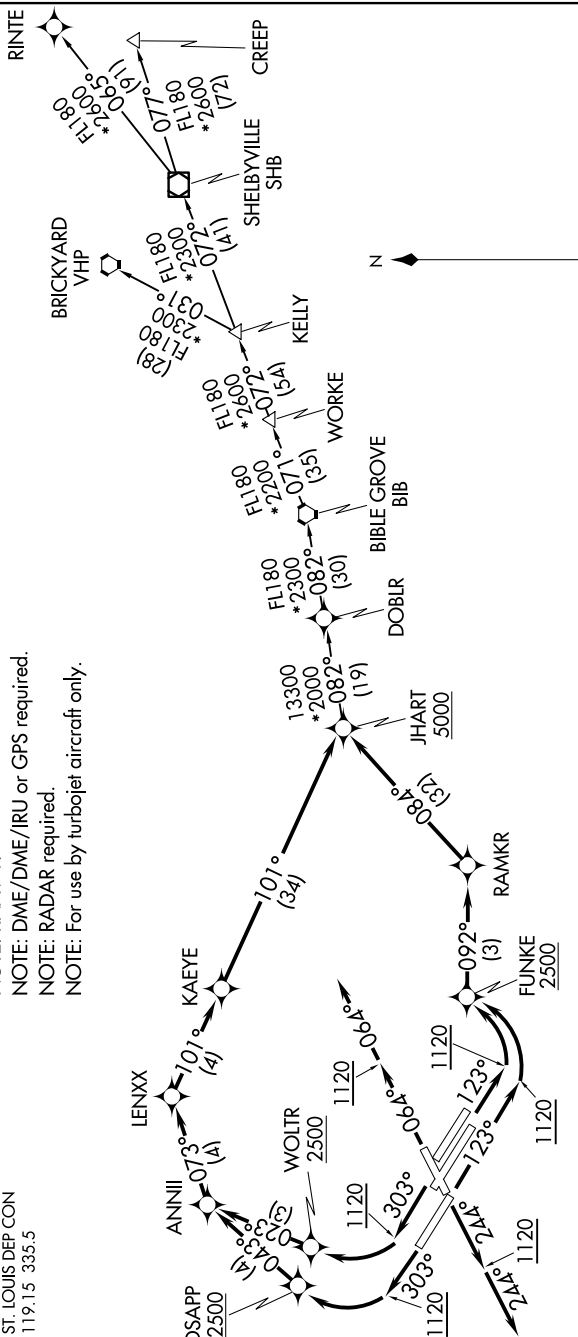
D-ATIS	125.025	379.925
CINC DEL	119.5	363.1
CPDLC		
GND CON	121.9	348.6 (Inbound)
	121.65	377.175 (Outbound)
	118.925	227.125
ST. LOUIS TOWER	120.05	284.6 (Rwy 18L)
	118.5	257.7 (Rwy 18R)
	132.475	239.275
ST. LOUIS DEP CON	119.15	335.5

NOTE: RNAV 1.

NOTE: DME/DME/IRU or GPS required.

NOTE: RADAR required.

NOTE: For use by turbojet aircraft only.



(NARRATIVE ON FOLLOWING PAGE)

NOTE: Chart not to scale.

## JHART SEVEN DEPARTURE (RNAV)

(JHART7.JHART) 07OCT21

ST. LOUIS, MISSOURI

ST LOUIS LAMBERT INTL (STL)