
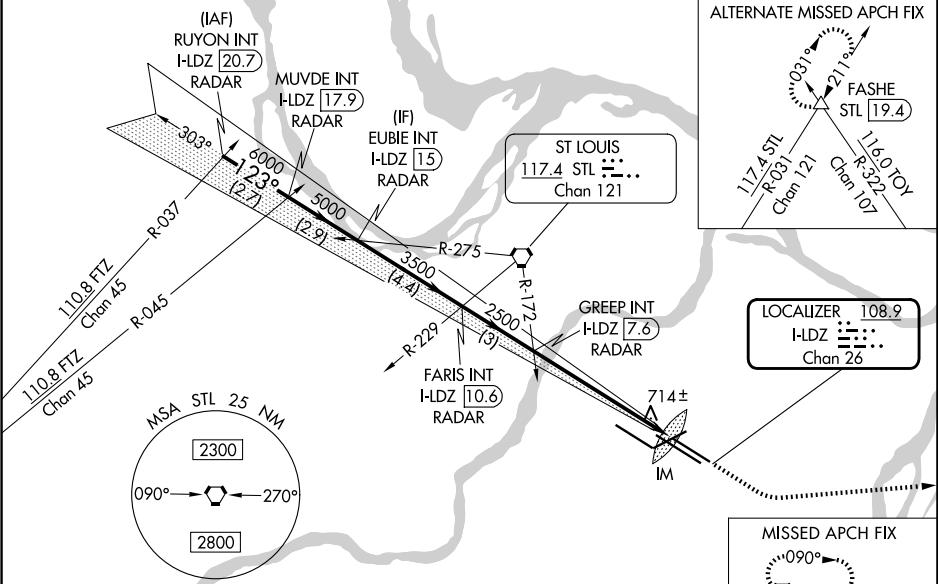


LOC/DME I-LDZ	APP CRS	Rwy Ldg	8956
108.9	123°	TDZE	541
Chan 26		Apt Elev	617

ILS or LOC RWY 12L

ST LOUIS LAMBERT INTL (STL)

RADAR and DME required.			ALS-2 	MISSED APPROACH: Climb to 2500 then climbing left turn to 3000 direct TOY VORTAC and hold.	
▼ For inop ALS, increase S-ILS 12L Cat E visibility to RVR 4000 and S-LOC 12L Cat E visibility to 1 1/2 SM. Simultaneous approach authorized with Rwy 11. Simultaneous approach authorized with Rwy 12R requires use of vertical guidance; maintain last altitude until established on the glideslope.					
D-ATIS 125.025 379.925	ST. LOUIS APP CON 132.125 360.6	ST. LOUIS TOWER 120.05 284.6	GND CON 121.9 348.6 (Inbound) 121.65 377.175 (Outbound) 118.925 227.125 (Rwy 11/29)		CLNC DEL 119.5 363.1



ELEV 617 **D** TDZE 541

Rwy 6-24 7603 X 150
Rwy 11-29 9000 X 150
Rwy 12L-30R 9013 X 150
Rwy 12R-30L 11020 X 150

HIRL all Rws
TDZ/CL Rws 11, 12L, 12R, 29, and 30R

FAF to MAP 5.9 NM

Knots	60	90	120	150	180
Min:Sec	5:54	3:56	2:57	2:22	1:58

VGSi and ILS glidepath not coincident (VGSi Angle 3.00/TCH 56).					
RUYON INT I-LDZ [20.7] RADAR	MUVDE INT I-LDZ [17.9] RADAR	EUBIE INT I-LDZ [15] RADAR	FARIS INT I-LDZ [10.6] RADAR	GREEP INT I-LDZ [7.6] RADAR	IM
GS 3.00° TCH 54					
CATEGORY	A	B	C	D	E
S-ILS 12L	741/18			200 (200-½)	741/24 200 (200-½)
S-LOC 12L	980/24 439 (400-½)			980/40 439 (400-¾)	980/50 439 (400-1)