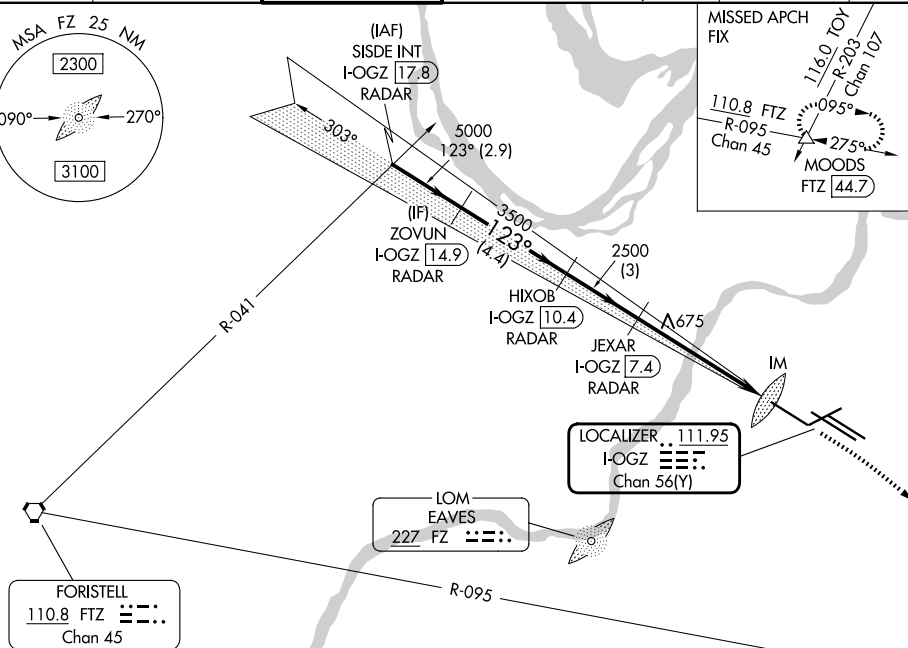
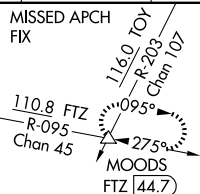
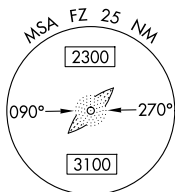


ILS or LOC RWY 11
ST LOUIS LAMBERT INTL (STL)

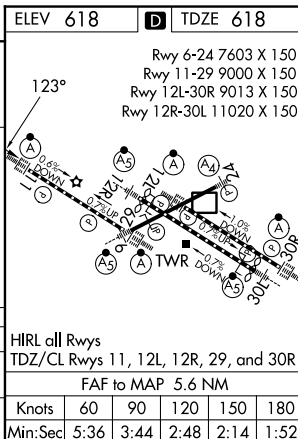
ALSF-2

MISSED APPROACH: Climb to 1060 then climbing right turn to 3000 on heading 130° and FTZ R-095 to MOODS INT/FTZ 44.7 DME and hold.

D-ATIS 125.025 379.925	ST. LOUIS APP CON 132.125 360.6	ST. LOUIS TOWER 132.475 239.275	GND CON 121.9 348.6 (Inbound) 121.65 377.175 (Outbound) 118.925 227.125 (Rwy 11/29)	CLNC DEL 119.5 363.1	CPDLC
--------------------------------------------	-------------------------------------------	-------------------------------------------	-------------------------------------------------------------------------------------------------------------------	--------------------------------	-------



VGSi and ILS glidepath not coincident (VGSi Angle 3.00°/TCH 67').						1060 ↑	3000 hdg 130°	FTZ R-095	MOODS △
SISDE INT I-OZG [17.8] RADAR	ZOVUN I-OZG [14.9] RADAR	HIXOB I-OZG [10.4] RADAR	JEXAR I-OZG [7.4] RADAR	*I-OZG [2.7]	I-OZG [1.8]	*LOC only			
<p>5000 — 123° — 5000 — 3500 — 2500 — 2500 — *I-OZG [2.7] — I-OZG [1.8] — IM</p> <p>GS 3.00° TCH 55</p> <p>2.9 NM 4.4 NM 3 NM 4.6 NM 0.9 NM 0.1</p>									
CATEGORY	A	B	C	D	E				
S-ILS 11	818/18 200 (200-½)								
S-LOC 11	980/24 362 (400-½)			980/35 362 (400-¾)					



NC-3, 07 AUG 2025 to 04 SEP 2025