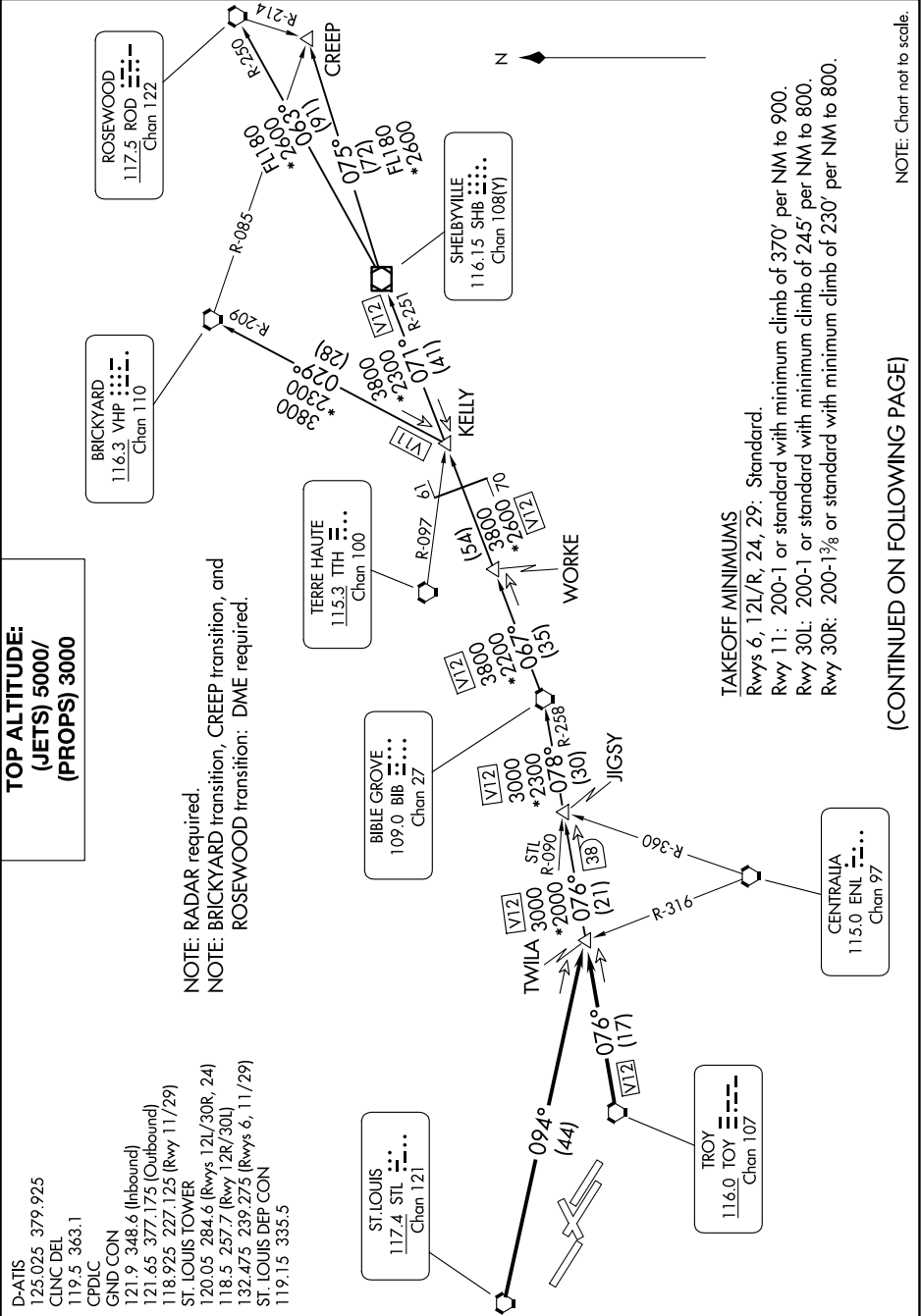


NC-3, 07 AUG 2025 to 04 SEP 2025

TOP ALTITUDE:  
(JETS) 5000/  
(PROPS) 3000

D-ATIS 125.025 379.925  
CLNC DEL 119.5 363.1  
CPDIC  
GND CON 121.9 348.6 (Inbound)  
121.65 377.175 (Outbound)  
118.925 227.125 (Rwy 11/29)  
ST. LOUIS TOWER 120.05 284.6 (Rwys 12L/30R, 24)  
118.5 257.7 (Rwy 12R/30L)  
132.475 239.275 (Rwys 6, 11/29)  
ST. LOUIS DEP CON 119.15 335.5

NOTE: RADAR required.  
NOTE: BRICKYARD transition, and  
ROSEWOOD transition: DME required.



(CONTINUED ON FOLLOWING PAGE)

NOTE: Chart not to scale.

NC-3, 07 AUG 2025 to 04 SEP 2025