

TIFTO EIGHT DEPARTURE

AL-359 (FAA)

ROSECRANS MEML (STJ)

ST. JOSEPH, MISSOURI

TOP ALTITUDE:
10000

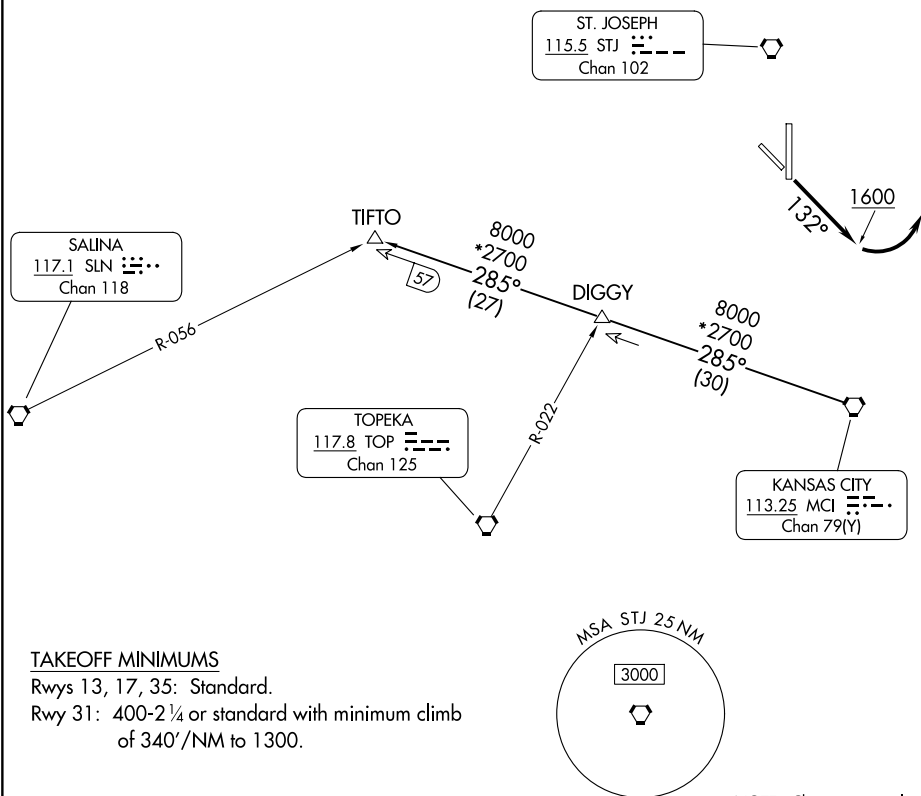
RADAR and DME required.

ST. JOSEPH DEP CON ★

120.35 360.8

ATIS

125.05



TAKEOFF MINIMUMS

Rwys 13, 17, 35: Standard.

Rwy 31: 400-2¼ or standard with minimum climb of 340'/NM to 1300.

NOTE: Chart not to scale

DEPARTURE ROUTE DESCRIPTION

TAKEOFF RUNWAY 13: Climb on heading 132° to 1600 before turning left, thence. . .

...climb on assigned heading for RADAR vectors to appropriate route. Maintain 10000, expect filed altitude 10 minutes after departure.

TAKEOFF ALL OTHER RUNWAYS: Climb on assigned heading for RADAR vectors to appropriate route. Maintain 10000, expect filed altitude 10 minutes after departure.

TIFTO TRANSITION (TIFTO8.TIFTO): From over MCI VORTAC on MCI R-285 to TIFTO.

TIFTO EIGHT DEPARTURE

(TIFTO8.MCI) 05OCT23

ST. JOSEPH, MISSOURI

ROSECRANS MEML (ST.J)

NC-3, 07 AUG 2025 to 04 SEP 2025