

WAAS CH 65835 W31A	APP CRS 312°	Rwy Ldg TDZE 812 Apt Elev 827
--	------------------------	---

RNAV (GPS) RWY 31

ROSECRANS MEML (STJ)

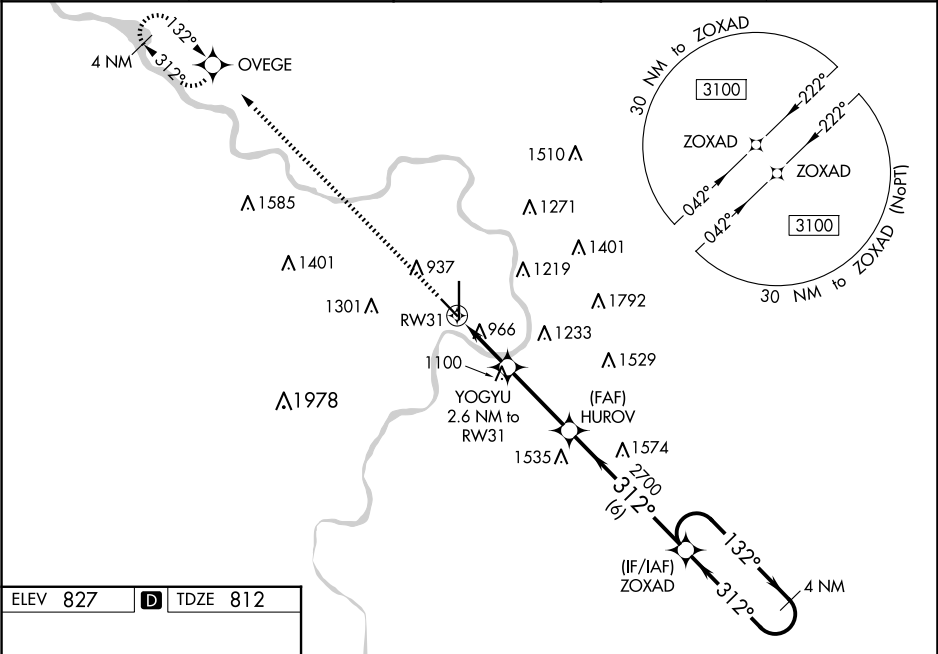
⚠

ASR/PAR

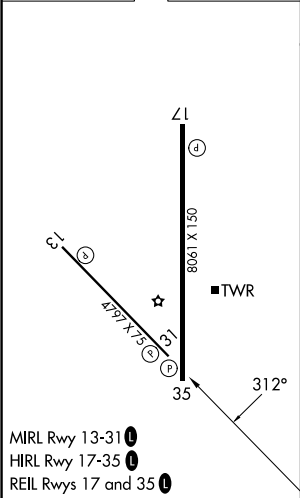
For uncompensated Baro-VNAV systems, LNAV/VNAV NA below -20°C (-4°F) or above 54°C (130°F). DME/DME RNP-0.3 NA. Baro-VNAV and VDP NA when using Kansas City Intl altimeter setting. Straight-In minimums NA at night. When local altimeter setting not received, use Kansas City Intl altimeter setting and increase all DA 97 feet and increase LPV visibility 1/8 mile and LNAV/VNAV visibility 3/8 mile all Cats; increase all MDA 100 feet and LNAV Cat C and D visibility 1/4 mile, and Circling Cat C 1/2 mile, Cat D 1/4 mile.

MISSED APPROACH:
Climb to 3100 direct OVEGE and hold.

ATIS 125.05	ST. JOSEPH APP CON ★ 120.35 360.8	ST. JOSEPH TOWER ★ 126.9 (CTAF) 0239.0	GND CON 121.9	UNICOM 122.95
-----------------------	---	---	-------------------------	-------------------------



ELEV 827	D	TDZE 812
-----------------	----------	-----------------



3100	OVEGE				
*LNAV only.		YOGYU 2.6 NM to RW31	HUROV 2700	ZOXAD	4 NM Holding Pattern
		*1.1 NM to RW31			
			1700*	312°	3100
				132°	
					GP 3.00° TCH 50
CATEGORY	A	B	C	D	
LPV DA	1062-1 250 (300-1)				
LNAV/VNAV DA	1255-1½ 443 (500-1½)				
LNAV MDA	1220-1 408 (400-1)		1220-1½ 408 (400-1½)		
CIRCLING	1400-1 573 (600-1)	1420-1 593 (600-1)	1620-2¼ 793 (800-2¼)	1640-2¾ 813 (900-2¾)	