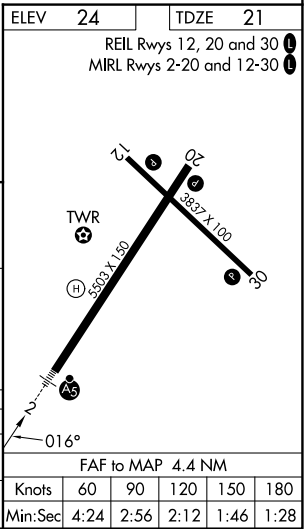
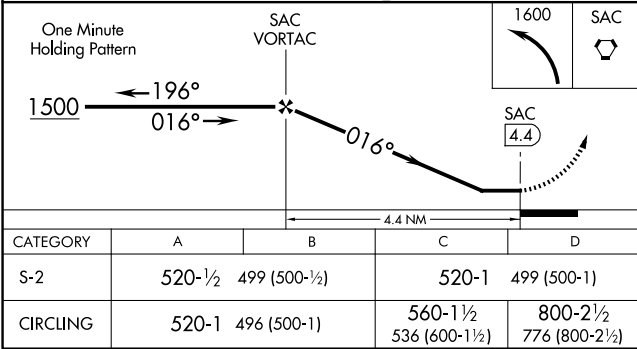
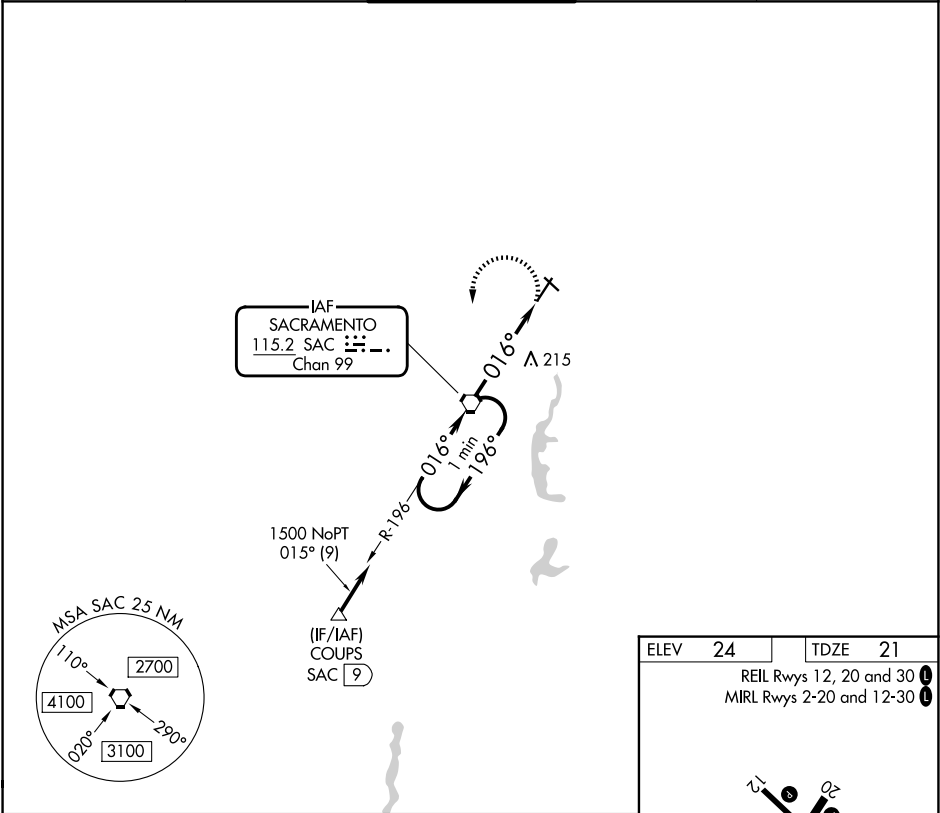


VORTAC SAC	APP CRS	Rwy Ldg	5503
115.2	016°	TDZE	21
Chan 99		Apt Elev	24

VOR RWY 2  
SACRAMENTO EXEC (SAC)

<div>⚠ When local altimeter setting not received, use Sacramento Intl altimeter setting and increase all MDAs 40 feet and Circling Cat D visibility ¼ SM.</div>		<div>MALSR</div> <div></div>	MISSED APPROACH: Climbing left turn to 1600 direct SAC VORTAC and hold.	
ATIS 118.075	NORCAL APP CON 125.25 257.9	EXEC TOWER ★ 119.5 (CTAF) 0 278.8	GND CON 125.0	UNICOM 122.95



SW-2, 07 AUG 2025 to 04 SEP 2025

SW-2, 07 AUG 2025 to 04 SEP 2025