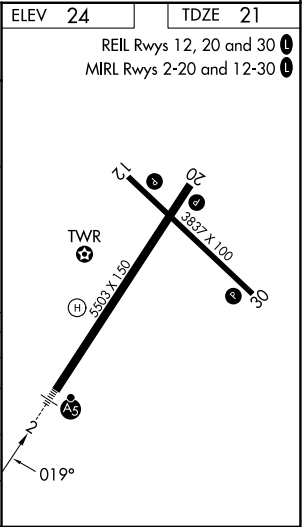
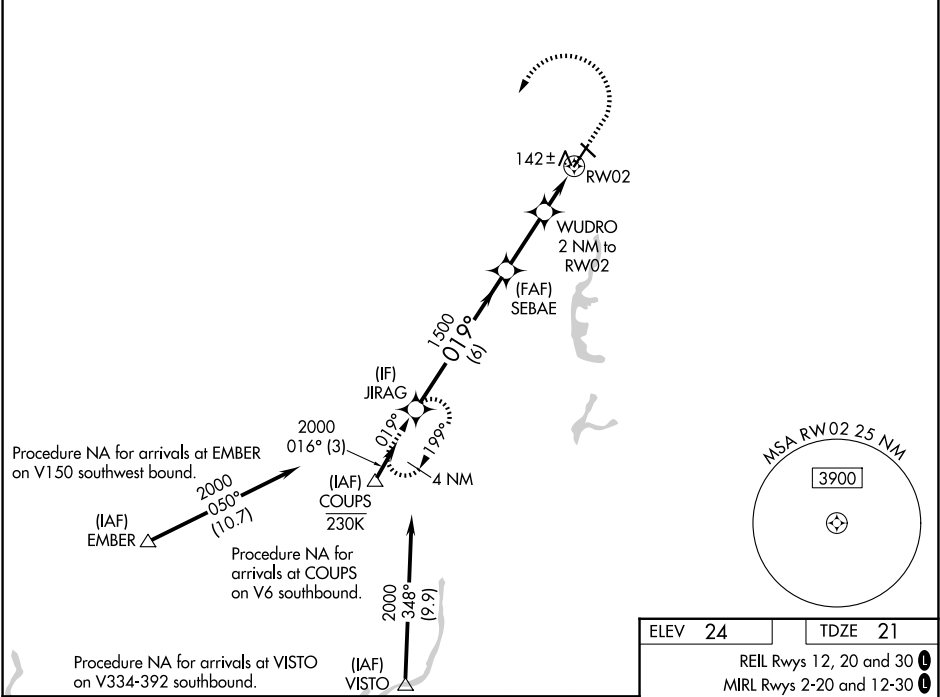


WAAS CH <b>62810</b> <b>W02A</b>	APP CRS <b>019°</b>	Rwy Ldg <b>5503</b> TDZE <b>21</b> Apt Elev <b>24</b>
--	------------------------	---

RNAV (GPS) RWY 2

SACRAMENTO EXEC (SAC)

RNP APCH-GPS. ▼ For uncompensated Baro-VNAV systems, LNAV/VNAV NA below -1°C or above 54°C. For inop ALS, increase LNAV/VNAV all Cats visibility to 7⁄8 SM, increase LNAV all Cats visibility to 1 SM. ▲			MALSR 	MISSED APPROACH: Climb to 440 then climbing left turn to 2000 direct JIRAG and hold.	
ATIS <b>118.075</b>	NORCAL APP CON <b>125.25 257.9</b>	EXEC TOWER ★ <b>119.5 (CTAF) 0 278.8</b>	GND CON <b>125.0</b>	UNICOM <b>122.95</b>	



CATEGORY	A	B	C	D
LPV DA	221-1⁄2		200 (200-1⁄2)	
LNAV/VNAV DA	304-1⁄2		283 (300-1⁄2)	
LNAV MDA	400-1⁄2 379 (400-1⁄2)		400-5⁄8 379 (400-5⁄8)	
CIRCLING	500-1 476 (500-1)	520-1 496 (500-1)	560-11⁄2 536 (600-11⁄2)	800-21⁄2 776 (800-21⁄2)