

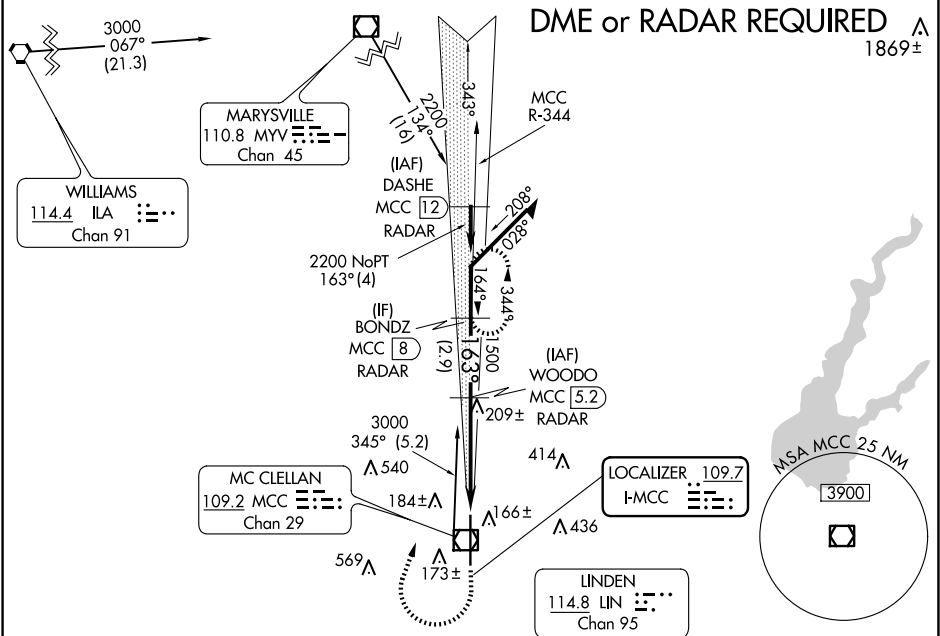
LOC I-MCC	APP CRS	Rwy Idg	10599
109.7	163°	TDZE	77
		Apt Elev	77

ILS or LOC RWY 16

MCC CLELLAN AIRFIELD (MCC)

NA	DME from MCC VOR/DME. If local altimeter setting is not received, use Sacramento Intl altimeter setting and increase all DH/MDAs 40 feet.	MALSR	MISSED APPROACH: Climb to 1200 then climbing right turn to 2200 via MCC VOR/DME R-344 to BONDZ/MCC 8 DME/RADAR and hold.
----	---	-------	--

AWOS-3	NORCAL APP CON	CINC DEL	UNICOM
125.975	127.4 317.5	119.825	122.975 (CTAF) 0



ELEV 77		TDZE 77	
163°		163°	
1200		2200	
Remain within 10 NM		BONDZ MCC 8 RADAR	
3000		MCC R-344	
343°		1500	
163°		4.3 NM	
GS 3.00°		HIRL Rwy 16-34	
TCH 51		FAF to MAP 4.3 NM	
CATEGORY	A	B	C
S-ILS 16	277-½	200 (200-½)	
S-LOC 16	460-½	383 (400-½)	460-¾ 383 (400-¾)
CIRCLING	NA		
Knots		Min:Sec	
60		4:18	
90		2:52	
120		2:09	
150		1:43	
180		1:26	