

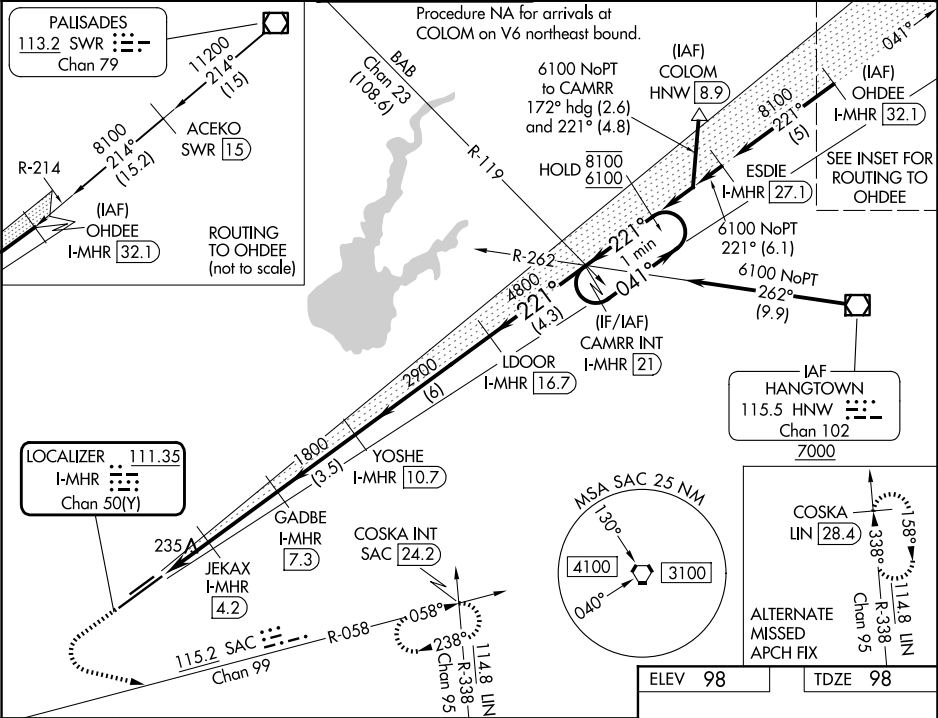
LOC/DME I-MHR 111.35 Chan 50(Y)	APP CRS 221°	Rwy Ldg TDZE Apt Elev 11301 98 98
---	------------------------	---

ILS Z or LOC Z RWY 22L

SACRAMENTO MATHER (MHR)

DME required for LOC only.	MALSR	MISSED APPROACH: Climb to 1000, then climbing left turn to 3500 on heading 090° and SAC VORTAC R-058 to COSKA INT/ SAC 24.2 DME and hold, continue climb-in-hold to 3500.
For inop ALS, increase S-ILS Cat E visibility to RVR 4000 and S-LOC Cat C/D/E visibility to RVR 6000. Circling NA northwest of Rwy 4R-22L. *RVR 1800 authorized with use of FD or AP or HUD to DA (NA when using Sacramento Exec altimeter setting).		

ATIS 118.325	NORCAL APP CON 127.4 317.5	MATHER TOWER ★ 120.65 (CTAF) 0 282.25	GND CON 121.85 307.9	CLNC DEL 121.85 307.9	UNICOM 122.95
------------------------	--------------------------------------	---	--------------------------------	---------------------------------	-------------------------



1000	3500	SAC R-058	COSKA INT	VGSI and ILS glidepath not coincident (VGSI Angle 3.00/TCH 50).	One Minute Holding Pattern
hdg 090°					
JEKAX I-MHR 4.2	GADBE I-MHR 7.3	YOSHE I-MHR 10.7	LDOOR I-MHR 16.7	CAMRR INT I-MHR 21	
800	1800	2900	4800	8100	6100
1.1	1 NM	3.1 NM	3.5 NM	6 NM	4.3 NM
GS 3.00°					TCH 56
CATEGORY	A	B	C	D	E
S-ILS 22L*	298/24 200 (200-½)				
S-LOC 22L	500/24	402 (500-½)	500/40	402 (500-¾)	
CIRCLING	560-1	462 (500-1)	600-1½ 502 (600-1½)	800-2¼ 702 (800-2¼)	800-2½ 702 (800-2½)

