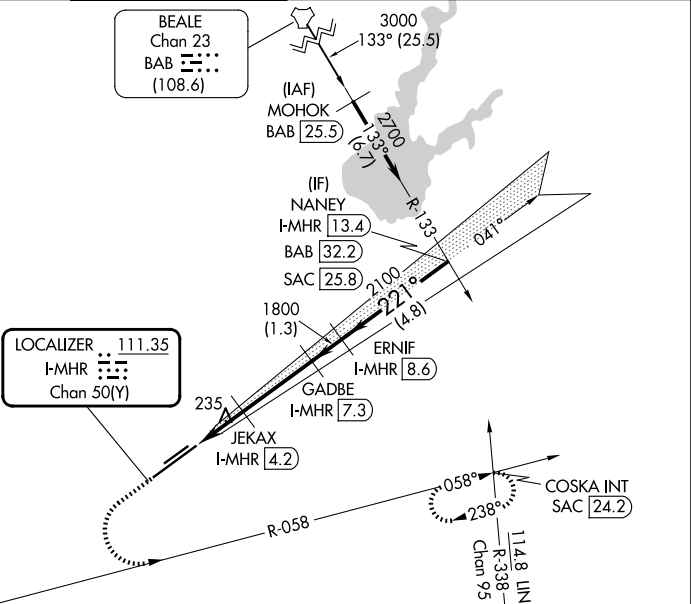
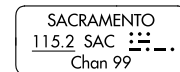
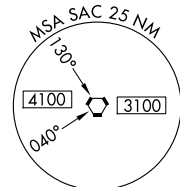
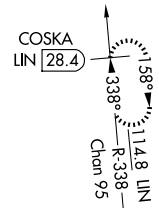


ILS Y or LOC Y RWY 22L  
SACRAMENTO MATHER (MHR)

MALSR

**MISSED APPROACH:** Climb to 1000, then climbing left turn to 3500 on heading 090° and SAC VORTAC R-058 to COSKA INT/ SAC 24.2 DME and hold, continue climb-in-hold to 3500.

### ALTERNATE MISSED APCH FIX



The diagram shows a runway layout for HIRL Rwy 4R-22L. At the top, two boxes contain the values 'ELEV 98' and 'TDZE 98'. The runway is depicted as a diagonal line with a bearing of 221°. Key features include:
 

- A runway width of 608 X 150' marked along the centerline.
- A total length of 11301 X 150' marked along the centerline.
- Obstacles represented by circles with numbers: 4R, 2, 45, 27R, and 45.
- A tower (TWR) located at 211' ±, marked with a star and the letter 'H'.
- A 221° bearing arrow at the right end of the runway.
- A small aircraft icon at the left end of the runway.

SW-2, 07 AUG 2025 to 04 SEP 2025

SW-2, 07 AUG 2025 to 04 SEP 2025