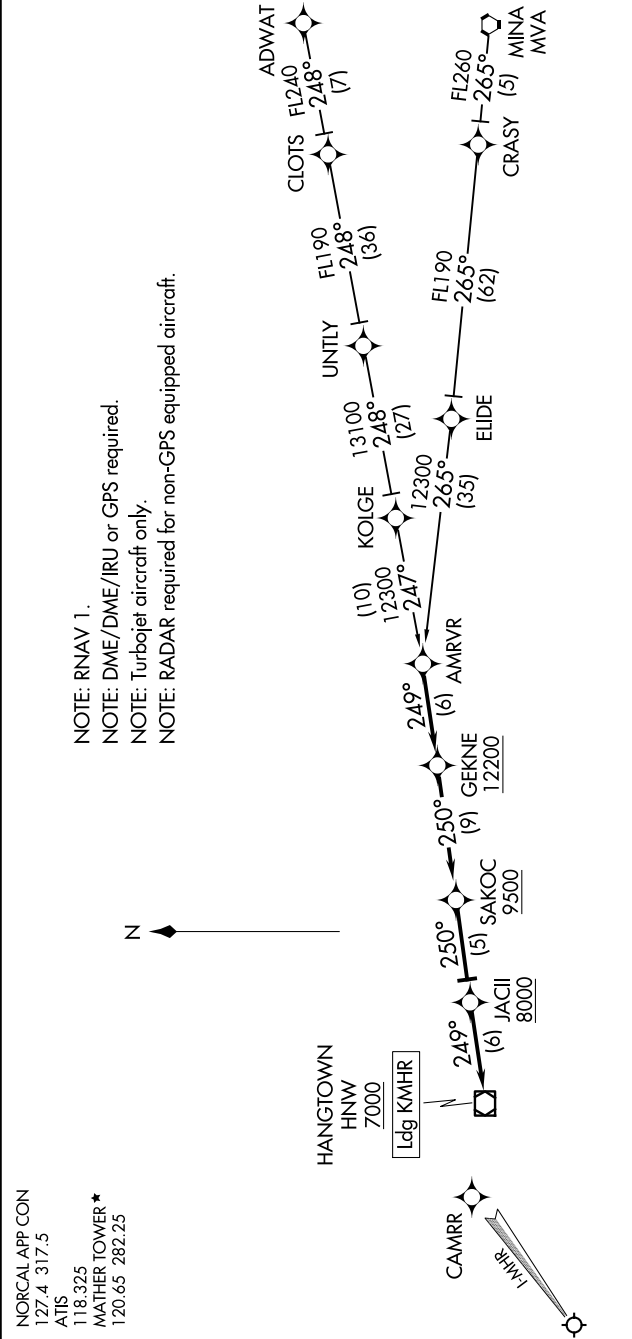


(AMRV.R.AMVR2) 24305

AMRV TWO ARRIVAL (RNAV)

AL-356 (FAA)

SACRAMENTO MATHER (MHR)
SACRAMENTO, CALIFORNIA



ARRIVAL ROUTE DESCRIPTION

ADWAT TRANSITION [ADWAT.AMVR2]

MINA TRANSITION [MVA.AMVR2]

... From AMVR on track 249° to cross GEKNE at or above 12200, then on track 250° to cross SAKOC at or above 9500, then on track 250° to cross JACII at or above 8000, then on track 249° to cross HNW VOR/DME at or above 7000. Expect ILS approach Runway 22L or visual approach.

AMRV TWO ARRIVAL (RNAV)

(AMRV.R.AMVR2) 13SEP18

SACRAMENTO, CALIFORNIA
SACRAMENTO MATHER (MHR)

NOTE: Chart not to scale.