

| | | |
|--|------------------------|--|
| WAAS CH 50202 W03A | APP CRS 035° | Rwy Ldg 13000 TDZE 3667 Apt Elev 3671 |
|--|------------------------|--|

RNAV (GPS) RWY 3
ROSWELL AIR CENTER (ROW)

RNP APCH - GPS.

▼

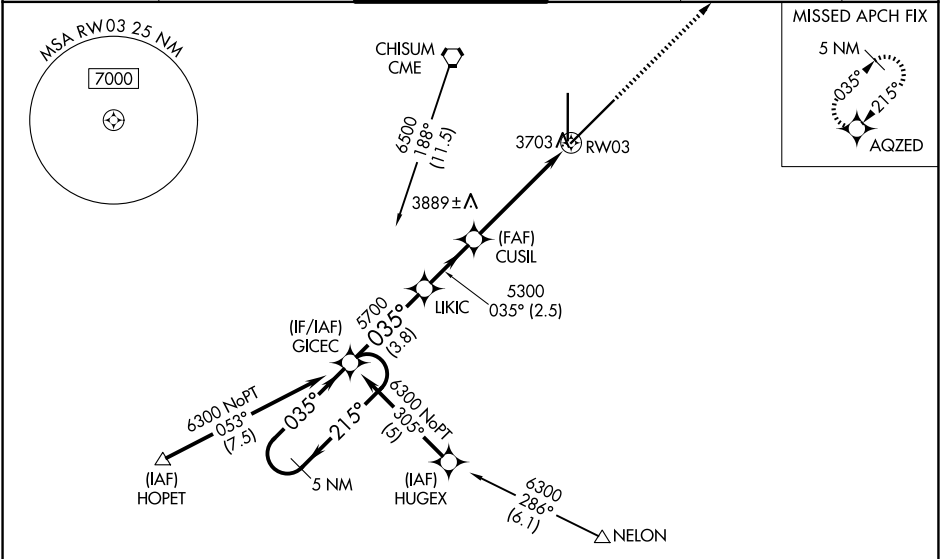
▲

ASR

For uncompensated Baro-VNAV systems, LNAV/VNAV NA below -22°C or above 41°C. When local altimeter setting not received, Use Artesia altimeter setting; increase LPV DA to 3997 feet and all visibilities ¼ SM; increase LNAV/VNAV DA to 4067 feet and all visibilities ½ SM; increase all MDAs 80 feet and LNAV visibility Cat C ¾ SM, Cat D ½ SM and Circling visibility Cat D ¼ SM. Baro-VNAV and VDP NA when using Artesia altimeter setting.

MISSED APPROACH: Climb to 6000 direct AQZED and hold.

| | | | | | |
|-----------------------------|---|--|-------------------------------|-----------------------------------|-------------------------|
| ATIS 128.45 306.2 | ROSWELL APP CON ★ 119.6 239.0 | ROSWELL TOWER ★ 118.5 (CTAF) 0 233.7 | GND CON 121.9 348.6 | CLNC DEL 132.875 282.25 | UNICOM 122.95 |
|-----------------------------|---|--|-------------------------------|-----------------------------------|-------------------------|



| | | | |
|--|--|--|----------------------|
| ELEV 3671 | | TDZE 3667 | |
| <div>5 NM Holding Pattern</div> <div>GP 3.00° TCH 50</div> | | <div>6000 AQZED</div> <div>1.3 NM to RWY03</div> | |
| CATEGORY | | A | |
| LPV DA | | 3917-¾ 250 (300-¾) | |
| LNAV/VNAV DA | | 3987-1 320 (400-1) | |
| LNAV MDA | | 4140-1 473 (500-1) | 4140-1½ 473 (500-1½) |
| CIRCLING | | 4140-1 469 (500-1) | 4300-2 629 (700-2) |