

|  |                        |  |
|--|------------------------|--|
| VOR/DME OCS<br><b>116.0</b><br>Chan <b>107</b> | APP CRS<br><b>085°</b> | Rwy Idg <b>10002</b><br>TDZE <b>6741</b><br>Apt Elev <b>6765</b> |
|--|------------------------|--|

VOR RWY 9  
SOUTHWEST WYOMING RGNL (RKS)

DME required.

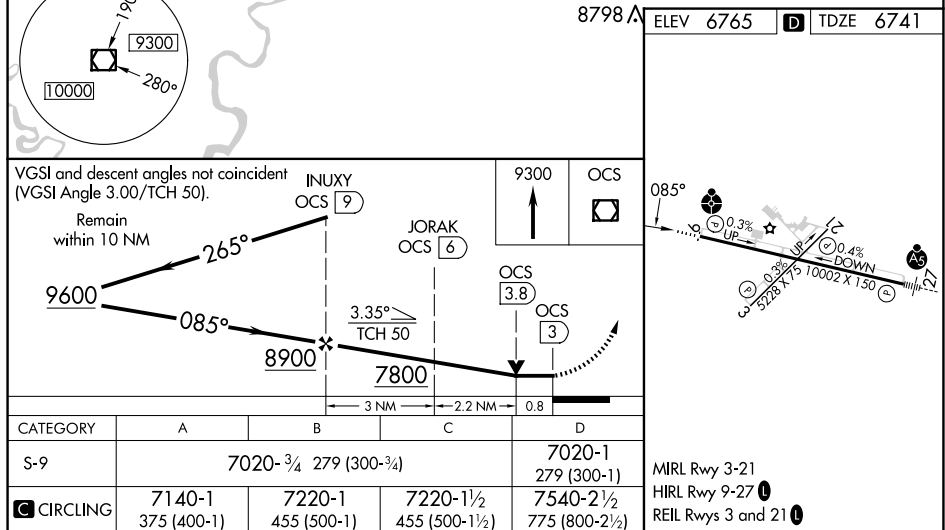
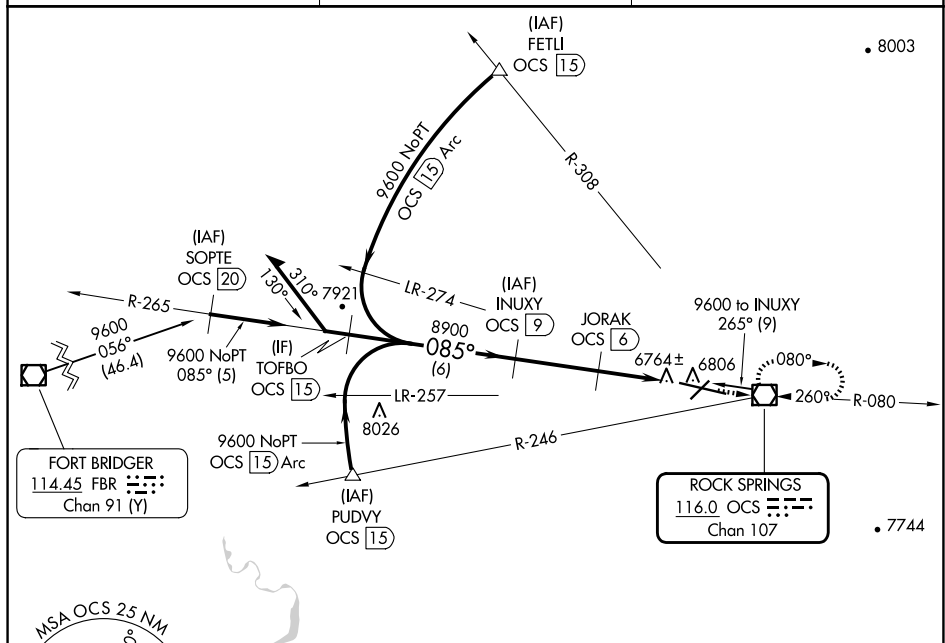


ODALS



**MISSED APPROACH:** Climb to 9300 direct OCS  
VOR/DME and hold, continue climb-in-hold to 9300.

|                          |   |                                 |
|--------------------------|---|---------------------------------|
| AWOS-3<br><b>118.375</b> | SALT LAKE CENTER<br><b>124.35 353.5</b> | UNICOM<br><b>122.8 (CTAF) ①</b> |
|--------------------------|---|---------------------------------|



ROCK SPRINGS, WYOMING

Amdt 3B 30JAN20

SOUTHWEST WYOMING RGNL (RKS)

VOR RWY 9

41°36'N-109°04'W

NW-1, 07 AUG 2025 to 04 SEP 2025

NW-1, 07 AUG 2025 to 04 SEP 2025