

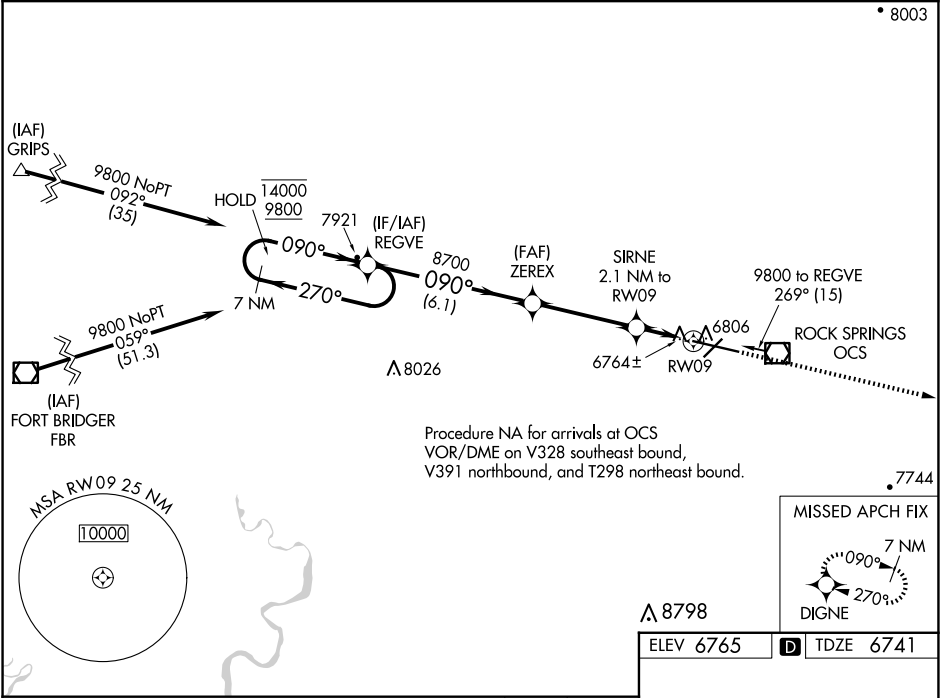
WAAS CH <b>66016</b> <b>W09A</b>	APP CRS <b>090°</b>	Rwy Idg <b>10002</b> TDZE <b>6741</b> Apt Elev <b>6765</b>
--	------------------------	--

RNAV (GPS) RWY 9

SOUTHWEST WYOMING RGNL (R.K.S)

RNP APCH.	ODALS	MISSED APPROACH: Climb to 9600 direct DIGNE and hold.
▼ For uncompensated Baro-VNAV systems, LNAV/VNAV NA ▲ below -28°C or above 45°C .		

AWOS-3 <b>118.375</b>	SALT LAKE CENTER <b>124.35 353.5</b>	UNICOM <b>122.8 (CTAF) 0</b>
--------------------------	---	---------------------------------



7 NM Holding Pattern		REGVE		9600 DIGNE	
14000 ← 270°		8700		*LNAV only.	
9800 → 090°		ZEREX		SIRNE 2.1 NM to RWY09	
GP 3.00°		8700		*0.8 NM to RWY09	
TCH 50		*7440		RWY09	
		6.1 NM		1.3 NM	
		3.8 NM		0.8	
CATEGORY	A	B	C	D	
LPV DA	6941-¾ 200 (200-¾)				
LNAV/VNAV DA	7034-¾ 293 (300-¾)				
LNAV MDA	7040-¾ 299 (300-¾)				7040-1 299 (300-1)
CIRCLING	7140-1 375 (400-1)	7220-1 455 (500-1)	7220-1½ 455 (500-1½)	7540-2½ 775 (800-2½)	
MIRL Rwy 3-21 HIRL Rwy 9-27 0 REIL Rws 3 and 21 0					