

WAAS CH 49216 W27A	APP CRS 270°	Rwy Idg 10002 TDZE 6765 Apt Elev 6765
--	------------------------	--

RNAV (GPS) RWY 27

SOUTHWEST WYOMING RGNL (RKS)

RNP APCH.

▼

For uncompensated Baro-VNAV systems, LNAV/VNAV NA below -27°C or above 44°C. For inop ALS increase LNAV/VNAV all Cats visibility to ¾ SM.

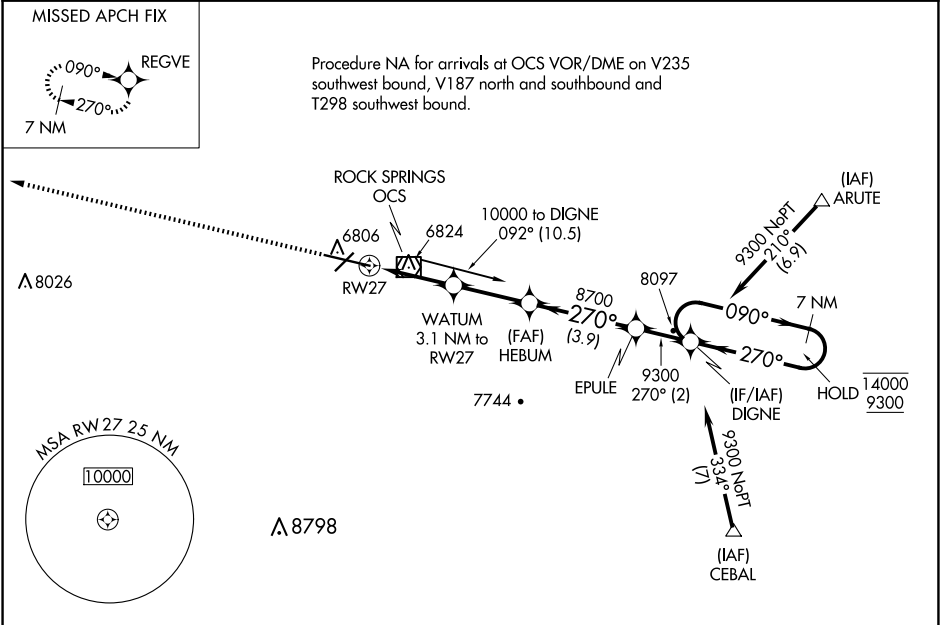
MALSR

AS

MISSED APPROACH: Climb to 9800

direct REGVE and hold.

AWOS-3 118.375	SALT LAKE CENTER 124.35 353.5	UNICOM 122.8 (CTAF) 0
--------------------------	---	---------------------------------



ELEV 6765 D TDZE 6765

9800

REGVE

WATUM 3.1 NM to RW27

HEBUM 8700

EPULE 9300

DIGNE 9300

7 NM Holding Pattern

*LNAV only.

*0.9 NM to RW27

7800*

0.9 NM 2.2 NM 2.8 NM 3.9 NM 2 NM

0.3% UP

0.4% DOWN

0.3% DOWN

0.3% DOWN

10002 X 150

270°

GP 3.00°

TCH 55

CATEGORY	A	B	C	D
LPV DA	6965-½ 200 (200-½)			
LNAV/VNAV DA	7036-½ 271 (300-½)			
LNAV MDA	7100-½ 335 (400-½)			
<div>CIRCLING</div>	7140-1 375 (400-1)	7220-1 455 (500-1)	7220-1½ 455 (500-1½)	7540-2 ½ 775 (800-2 ½)