

ROCHESTER, NEW YORK

AL-351 (FAA)

24305

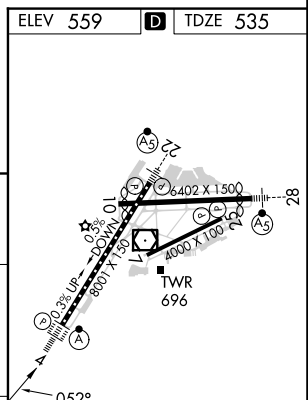
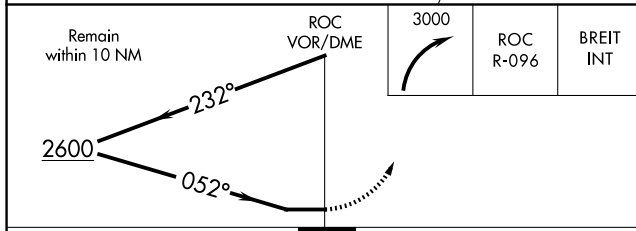
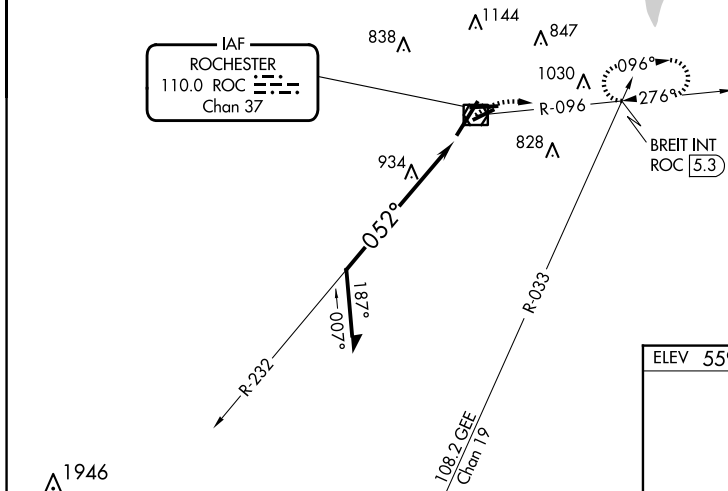
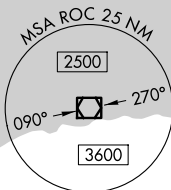
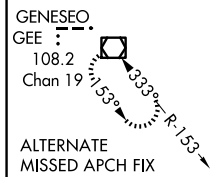
VOR/DME ROC <b>110.0</b> Chan <b>37</b>	APP CRS <b>052°</b>	Rwy Idg <b>8001</b> TDZE <b>535</b> Apt Elev <b>559</b>
---	------------------------	---

VOR RWY 4  
FREDERICK DOUGLASS/GREATER ROCHESTER INTL (ROC)

VOR RWY 4

<p><b>▼</b> For inop ALSF-2, increase S-4 Cat A visibility to RVR 5000, increase Cats C/D visibility to 2.  <b>▲</b> Helicopter visibility reduction below RVR 4000 NA.</p>	<p>ALSF-2</p> 	<p><b>MISSED APPROACH:</b> Climbing right turn to 3000 on ROC VOR/DME R-096 to BREIT INT/ROC 5.3 DME and hold, continue climb-in-hold to 3000.</p>
---	---	--

ATIS <b>124.825</b>	ROCHESTER APP CON <b>119.55 269.6</b>	ROCHESTER TOWER <b>118.3 254.3</b>	GND CON <b>121.7</b>	CLNC DEL <b>118.8 343.65</b>
------------------------	--	---------------------------------------	-------------------------	---------------------------------



CATEGORY	A	B	C	D
S-4	1280/40	745 (800- $\frac{3}{4}$ )	1280-1 $\frac{3}{4}$	745 (800-1 $\frac{3}{4}$ )
C CIRCLING	1280-1 721 (800-1)	1280-1 $\frac{1}{4}$ 721 (800-1 $\frac{1}{4}$ )	1500-2 $\frac{3}{4}$ 941 (1000-2 $\frac{3}{4}$ )	1500-3 941 (1000-3)

TDZ/CL Rwy 4  
REIL Rwy 7, 10 and 25  
MIRL Rwy 7-25  
HIRL Rwy 10-28 and 4-22

ROCHESTER, NEW YORK  
Amdt 12A 05MAR15

FREDERICK DOUGLASS/GREATER ROCHESTER INTL (ROC)  
43°07'N-77°40'W

NE-2, 07 AUG 2025 to 04 SEP 2025